



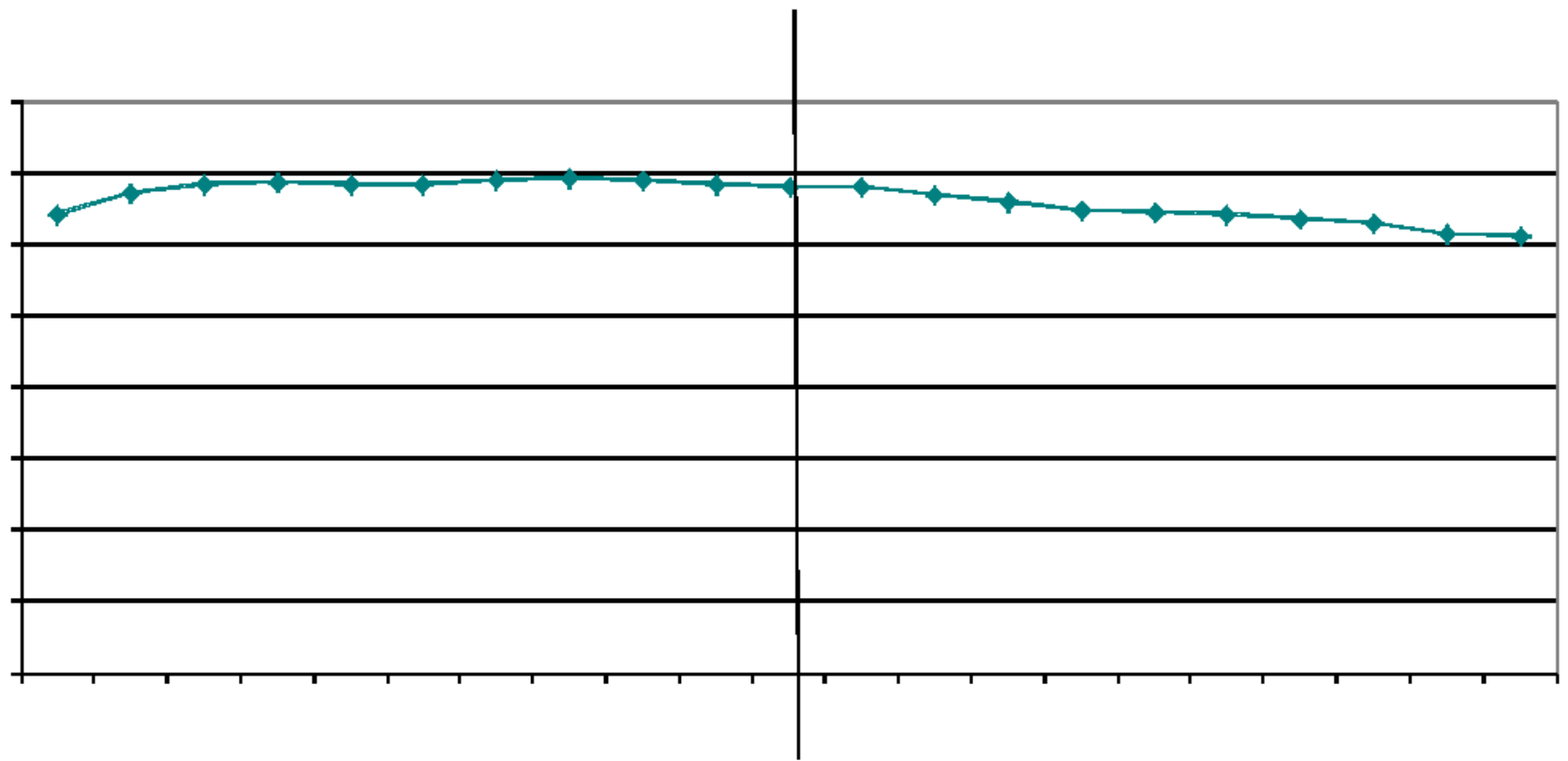
HOPKINTON, MASSACHUSETTS

Demography and Enrollment Projections

Donald G. Kennedy, Ed.D.

June 20, 2013

Projected Enrollment PK-12, 2002-2022 Hopkinton, MA Historical & Projected Enrollment



*

HOPKINTON HIGH SCHOOL HISTORY OF CLASS OF 2013

1995 Births 195			
Year	Grade	Hopkinton Public Schools	
		HPS	Non-Public
1999-00	Preschool	48	-
2000-01	Kindergarten	231	6
2001-02	Grade 1	253	11
2002-03	Grade 2	265	12
2003-04	Grade 3	269	7
2004-05	Grade 4	267	7
2005-06	Grade 5	263	7
2006-07	Grade 6	261	14
2007-08	Grade 7	262	14
2008-09	Grade 8	263	17
2009-10	Grade 9	249 + 10 voc	23
2010-11	Grade 10	244 + 11 voc	22
2011-12	Grade 11	237 + 11 voc	n/a
2012-13	Grade 12	244 + 11 voc	23

Note the pattern of “growth/steadiness” that a class typically experiences between Kindergarten and Grade 12

School District: Hopkinton, MA Revised

6/10/2013

Historical Enrollment By Grade

Birth Year	Births	School Year	PK	K	1	2	3	4	5	6	7	8	9	10	11	12	UNGR	K-12	PK-12
1997	229	2002-03	51	271	286	265	268	288	270	253	258	223	223	206	187	165	0	3163	3214
1998	215	2003-04	50	279	283	294	269	271	290	270	245	269	213	229	204	186	0	3302	3352
1999	200	2004-05	67	227	296	297	300	267	281	277	271	244	252	213	227	203	0	3355	3422
2000	227	2005-06	68	233	244	294	299	305	263	283	271	269	231	246	206	226	0	3370	3438
2001	233	2006-07	66	233	256	239	298	296	298	261	278	271	254	226	242	202	0	3354	3420
2002	222	2007-08	52	233	245	258	242	297	291	293	262	275	251	260	226	240	0	3373	3425
2003	215	2008-09	61	231	250	249	269	252	297	283	295	263	256	258	262	226	0	3391	3452
2004	180	2009-10	64	199	274	253	255	273	254	287	282	293	249	264	254	261	0	3398	3462
2005	182	2010-11	51	231	228	284	254	261	276	250	290	282	288	244	257	258	0	3403	3454
2006	172	2011-12	48	179	248	234	298	257	266	268	252	295	270	290	237	272	0	3366	3414
2007	166	2012-13	46	200	200	259	245	305	260	261	264	258	294	286	289	244	0	3365	3411

Historical Enrollment in Grade Combination

Year	K-1	2-3	4-5	K-5	K-8	6-8	7-8	7-12	9-12
2002-03	557	533	558	1648	2382	734	481	1262	781
2003-04	562	563	561	1686	2470	784	514	1346	832
2004-05	523	597	548	1668	2460	792	515	1410	895
2005-06	477	593	568	1638	2461	823	540	1449	909
2006-07	489	537	594	1620	2430	810	549	1473	924
2007-08	478	500	588	1566	2396	830	537	1514	977
2008-09	481	518	549	1548	2389	841	558	1560	1002
2009-10	473	508	527	1508	2370	862	575	1603	1028
2010-11	459	538	537	1534	2356	822	572	1619	1047
2011-12	427	532	523	1482	2297	815	547	1616	1069
2012-13	400	504	565	1469	2252	783	522	1635	1113

Historical Percentage Change

Year	K-12	Diff.	%
2002-03	3163	0	0.0%
2003-04	3302	139	4.4%
2004-05	3355	53	1.6%
2005-06	3370	15	0.4%
2006-07	3354	-16	-0.5%
2007-08	3373	19	0.6%
2008-09	3391	18	0.5%
2009-10	3398	7	0.2%
2010-11	3403	5	0.1%
2011-12	3366	-37	-1.1%
2012-13	3365	-1	0.0%
Change		202	6.4%

*

ASSUMPTIONS FOR PROJECTIONS

- **“NET MOVE-IN’S” TO KINDERGARTEN WILL AGAIN RISE INTO THE 40-50 RANGE**
- **IN-MIGRATION WILL RETURN TO THE LEVELS EXPERIENCED A DECADE AGO**
- **BIRTHS WILL INCREASE AS IN-MIGRATION OF NEW FAMILIES OCCURS**
- **QUALITY OF HOPKINTON AND ITS SCHOOLS WILL CONTINUE TO BE A MAJOR “DRAW”**
- **NOTE: TEN-YEAR PROJECTION MAY BE EXCEEDED, PROVIDED THE ECONOMIC RECOVERY IS SUSTAINED**

School District: **Hopkinton, MA** Revised

6/10/2013

Assumptions: "Net Move-ins" to Kindergarten will again rise to the 40-50 range; in-migration will return to levels experienced a decade ago; births will rise with the return of in-migration

Enrollment Projections By Grade*

Birth Year	Births		School Year	PK	K	1	2	3	4	5	6	7	8	9	10	11	12	UNGR	K-12	PK-12
2007	166		2012-13	46	200	200	259	245	305	260	261	264	258	294	286	289	244	0	3365	3411
2008	138		2013-14	48	178	224	207	269	252	309	260	263	268	253	300	283	298	0	3364	3412
2009	133		2014-15	50	178	199	232	215	274	256	302	260	267	263	258	294	291	0	3289	3339
2010	119		2015-16	52	164	201	207	244	224	279	256	304	265	267	271	258	303	0	3243	3295
2011	124	(prov.)	2016-17	54	169	185	209	217	254	228	279	257	310	265	275	271	266	0	3185	3239
2012	127	(prov.)	2017-18	56	172	191	192	219	226	259	228	280	262	310	273	275	279	0	3166	3222
2013	128	(est.)	2018-19	58	173	194	199	202	228	231	259	229	286	262	319	273	283	0	3138	3196
2014	132	(est.)	2019-20	60	177	195	202	209	210	233	231	260	234	286	270	319	281	0	3107	3167
2015	138	(est.)	2020-21	62	183	200	203	212	217	214	233	232	265	234	295	270	329	0	3087	3149
2016	144	(est.)	2021-22	64	189	207	208	213	220	221	214	234	237	265	241	295	278	0	3022	3086
2017	150	(est.)	2022-23	66	195	214	215	218	222	224	221	215	239	237	273	241	304	0	3018	3084

*Projections should be updated on an annual basis.

Based on an estimate of births

Based on children already born

Based on students already enrolled

Projected Enrollment in Grade Combinations									
Year	K-1	2-3	4-5	K-5	K-8	6-8	7-8	7-12	9-12
2012-13	400	504	565	1469	2252	783	522	1635	1113
2013-14	402	476	561	1439	2230	791	531	1665	1134
2014-15	377	447	530	1354	2183	829	527	1633	1106
2015-16	365	451	503	1319	2144	825	569	1668	1099
2016-17	354	426	482	1262	2108	846	567	1644	1077
2017-18	363	411	485	1259	2029	770	542	1679	1137
2018-19	367	401	459	1227	2001	774	515	1652	1137
2019-20	372	411	443	1226	1951	725	494	1650	1156
2020-21	383	415	431	1229	1959	730	497	1625	1128
2021-22	396	421	441	1258	1943	685	471	1550	1079
2022-23	409	433	446	1288	1963	675	454	1509	1055

Projected Percentage Change			
Years	K-12	Diff.	%
2012-13	3365	0	0.0%
2013-14	3364	-1	0.0%
2014-15	3289	-75	-2.2%
2015-16	3243	-46	-1.4%
2016-17	3185	-58	-1.8%
2017-18	3166	-19	-0.6%
2018-19	3138	-28	-0.9%
2019-20	3107	-31	-1.0%
2020-21	3087	-20	-0.6%
2021-22	3022	-65	-2.1%
2022-23	3018	-4	-0.1%
Change		-347	-10.3%

See "Reliability of Enrollment Projections" section of accompanying letter.

Projections are more reliable for Years 1-5 in the future than for Years 6 and beyond.

*

Building Permits Issued		
Year	Single-Family	Multi-Units
2000	129	0
2008	22	2
2009	33	0
2010	23	8
2011	29	8
2012	35	66

Enrollment History		
Year	Voc-Tech 9-12 Total	Non-Public K-12 Total
2000-01	38	125
2008-09	23	233
2009-10	28	170
2010-11	29	165
2011-12	30	191
2012-13	29	178

Source: HUD and Building Department
2013 to 4/30 = 11 S-F + 45 Multi-Units

Residents in Non-Public Independent and Parochial Schools (Regular Education)

Enrollment as of Oct.	K	1	2	3	4	5	6	7	8	9	10	11	12	K-12 TOTAL
	13	6	6	8	4	13	6	17	14	21	22	25	23	178

K-12 Home-Schooled Students	
2012	29

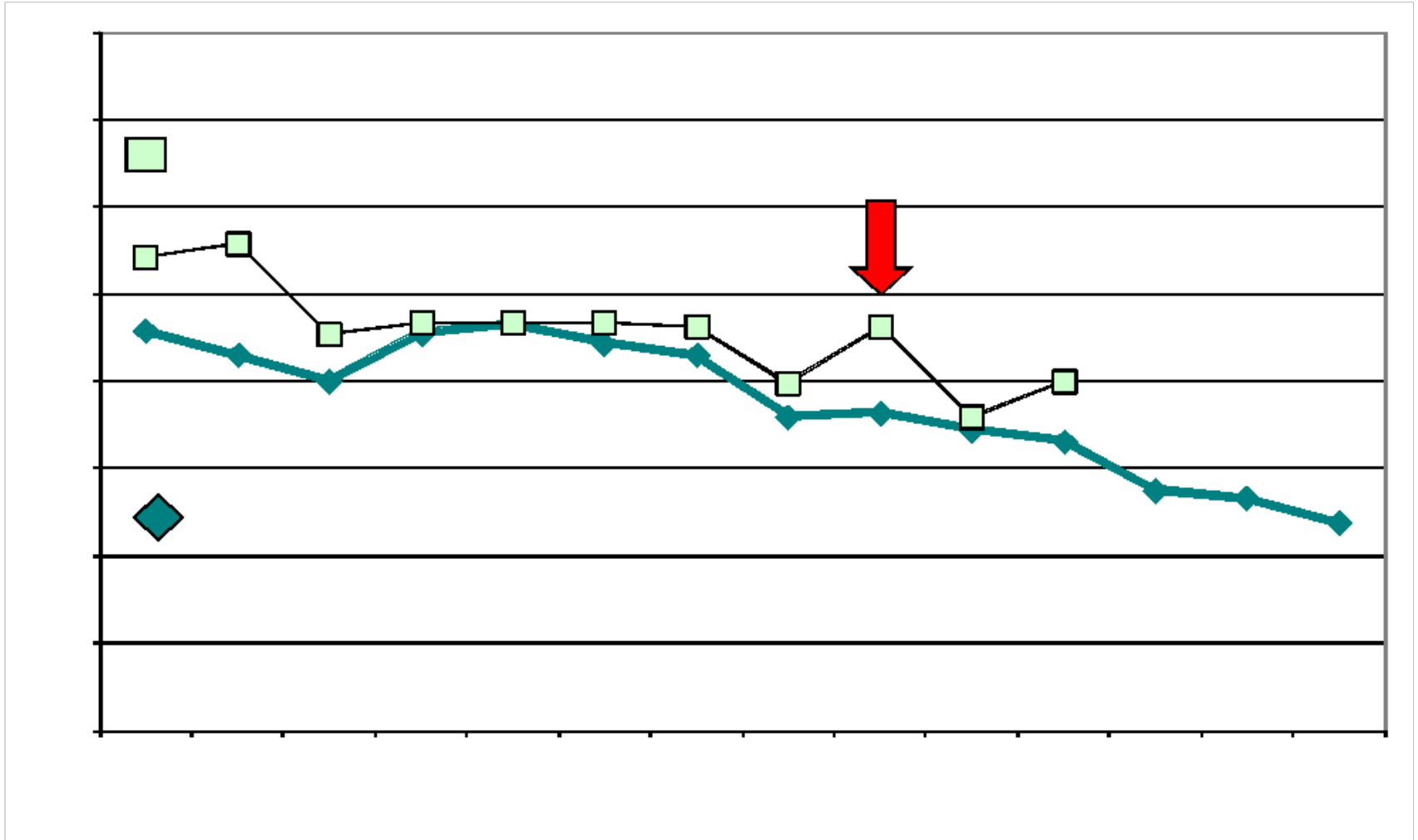
K-12 Residents "Choiced-out" in Charter or Magnet School	
2012	26

K-12 SpEd Outplaced Students	
2012	29

K-12 Choiced-In, Tuitioned-In, & Non-Residents	
2012	0

The above data were used to assist in the preparation of the enrollment projections. If additional demographic work is needed, please contact our office.

Hopkinton, MA Birth-to-Kindergarten Relationship



*

41 YEARS OF HOPKINTON BIRTHS & 5 YEAR INTERVA

Birth Year	Hopkinton Births	Birth Year	Hopkinton Births	Birth Year	Hopkinton Births	5-Year Groupings	Average # Births
1972	78	1986	157	2000	227	1972-77	81.3
1973	91	1987	143	2001	233	1978-82	117.4
1974	76	1988	162	2002	222	1983-87	135.8
1975	70	1989	149	2003	215	1988-92	166.2
1976	84	1990	191	2004	180	1993-97	208.8
1977	89	1991	144	2005	182	1998-02	219.4
1978	111	1992	185	2006	172	2003-07	183.0
1979	117	1993	197	2007	166	2008-12	128.2
1980	104	1994	203	2008	138		
1981	123	1995	195	2009	133		
1982	132	1996	220	2010	119		
1983	124	1997	229	2011	124		
1984	149	1998	215	2012	127		
1985	106	1999	200				

NESDEC June 10, 2013

Town Clerk: 2011 = 121; 2012 = 124 (MA DPH averages 3 additional)

BIRTHS OF 160+ IN RED

36 Years of Hopkinton's Birth-to-Kindergarten Experience

Birth Year	Hopkinton Births	Kind. Year	# in Kind.	Net "move-in's"	Birth-K Ratio
1972	78	1977-78	84	6	1.08
1973	91	1978-79	102	11	1.12
1974	76	1979-80	107	31	1.41
1975	70	1980-81	98	28	1.40
1976	84	1981-82	118	34	1.40
1977	89	1982-83	88	-1	0.99
1978	111	1983-84	124	13	1.12
1979	117	1984-85	116	-1	0.99
1980	104	1985-86	108	4	1.04
1981	123	1986-87	134	11	1.09
1982	132	1987-88	130	-2	0.98
1983	124	1988-89	150	26	1.21
1984	149	1989-90	168	19	1.13
1985	106	1990-91	161	55	1.52
1986	157	1991-92	154	-3	0.98
1987	143	1992-93	172	29	1.20
1988	162	1993-94	190	28	1.17
1989	149	1994-95	188	39	1.26

Birth Year	Hopkinton Births	Kind. Year	# in Kind.	Net "move-in's"	Birth-K Ratio
1990	191	1995-96	224	33	1.17
1991	144	1996-97	203	59	1.41
1992	185	1997-98	233	48	1.26
1993	197	1998-99	233	36	1.18
1994	203	1999-00	240	37	1.18
1995	195	2000-01	231	36	1.18
1996	220	2001-02	250	30	1.14
1997	229	2002-03	271	42	1.18
1998	215	2003-04	279	64	1.30
1999	200	2004-05	227	27	1.14
2000	227	2005-06	233	6	1.03
2001	233	2006-07	233	0	1.00
2002	222	2007-08	233	11	1.05
2003	215	2008-09	231	16	1.07
2004	180	2009-10	199	19	1.11
2005	182	2010-11	231	49	1.27
2006	172	2011-12	179	7	1.04
2007	166	2012-13	200	34	1.20

K-12 PROJECTIONS TO 2017-18...and BEYOND

Starting in 2011-12, enrollments began to decline – first, driven by fewer families moving in, with fewer births now beginning to strengthen the decline. Now, births continue to be a concern, yet recent in-migration of additional new families suggest that enrollment declines will be less severe

	K-5	6-8	9-12	K-12 TOTAL
2010-11	1,534	822	1,047	3,403
2012-13	<u>1,469</u>	<u>783</u>	<u>1,113</u>	<u>3,365</u>
	-65	-39	+66	-38

“Five-years-out,” with in-migration picking up in 2014-15, and returning to its earlier pace by 2015-16 – births still lagging

	K-5	6-8	9-12	K-12 TOTAL
2017-18	1,259	770	1,137	3,166

“Ten-years-out,” with a continuation of somewhat fewer births, yet steady in-migration related to the additional housing

	K-5	6-8	9-12	K-12 TOTAL
2022-23	1,288	675	1,055	3,018

K-12 PROJECTIONS TO 2017-18...and BEYOND (cont'd)

IS THERE A POSSIBILITY THAT THE SLOW, STEADY RETURN TO IN-MIGRATION FORECAST BY NESDEC WILL BE EXCEEDED?

YES, HOPKINTON HAS A HISTORY OF FACTORS TAKING ABRUPT TURNS (see slides #9, 10, 40) MAKING PROJECTIONS DIFFICULT, EVEN WHEN THE ECONOMY HAS BEEN MORE CONSISTENT

THAT SAID, THE NESDEC PROJECTIONS COULD PROVE TO BE AT THE LOW END OF A RANGE; THUS, AN ENROLLMENT UPDATE IN FALL 2013-14 NEEDS TO BE WATCHED CAREFULLY; IN ADDITION TO THE NEW ENROLLMENTS, NEW PROJECTIONS OF AGE COHORTS WILL BE AVAILABLE FROM UMASS (see slide #15)

FACTORS DRIVING HOPKINTON'S ENROLLMENTS

.DOWNWARD THRUST FROM... REAL ESTATE SALES DURING THE RECESSION WERE ONLY 60-70% OF PREVIOUS VOLUME; BIRTHS HAVE DECLINED RAPIDLY (see slide #9); 2010 U.S. CENSUS NOTES FEWER AGES 0-4 (see slides 18-21)

.UPWARD PUSH FROM... ADDITIONAL HOME CONSTRUCTION UNDERWAY, WITH MORE PLANNED; SALES PICKING UP (see slides #24-34); ALTHOUGH RENTAL UNITS ALWAYS HAVE FEWER CHILDREN, THE CONTINUED DRAW OF HOPKINTON AND ITS SCHOOLS WILL RESULT IN MANY MORE CHILDREN OF SCHOOL AGE – DOUBLE THE STATE AVERAGE (see slides #34-35)



New England School Development Council

28 Lord Road, Marlborough, MA 01752 ▶ Tel: 508-481-9444 ▶ www.nesdec.org

HOW WE KNOW WHAT WE THINK WE KNOW:

HOPKINTON DEMOGRAPHIC DATA



Thank you to Elaine Lazarus, Judi Barrett,
and realtors for their kind cooperation

TABLE 1B

HOPKINTON POPULATION 1900-2011

Year	U.S. Census	U.S. Census Estimate*
1900	2,623	
1910	2,452	
1920	2,289	
1930	2,563	
1940	2,697	
1950	3,486	
1960	4,932	
1970	5,981	
1980	7,114	
1990	9,191	15,245
2000	13,346	15,478
2010	14,925	
2011		
2012		

* US Census Estimate; the estimate for 2013 will be released after May 1, 2014; by September 1, 2013, the Donohue Institute at UMASS Amherst expects to release 2020 projections (high/mid/low) as well as projections by age cohorts

*

TABLE 2 PERCENTAGE OF POPULATION UNDER THE AGE OF 18 AND MEDIAN AGE

STATE OF MASSACHUSETTS:

	NO. UNDER 18	% UNDER 18	MEDIAN AGE
1990	1,353,075	22.5%	33.6
2000	1,500,064	23.6%	36.5
2010	1,418,923	21.7%	39.1

MIDDLESEX COUNTY:

	NO. UNDER 18	% UNDER 18	MEDIAN AGE
1990	290,992	20.8%	33.6
2000	329,073	22.5%	36.4
2010	320,439	21.3%	38.5

TOWN OF HOPKINTON:

	NO. UNDER 18	% UNDER 18	MEDIAN AGE
1990	2,580	28.1%	33.7
2000	4,417	33.1%	36.2
2010	5,230	35.0%	40.3

*

PERCENTAGE OF POPULATION UNDER 18

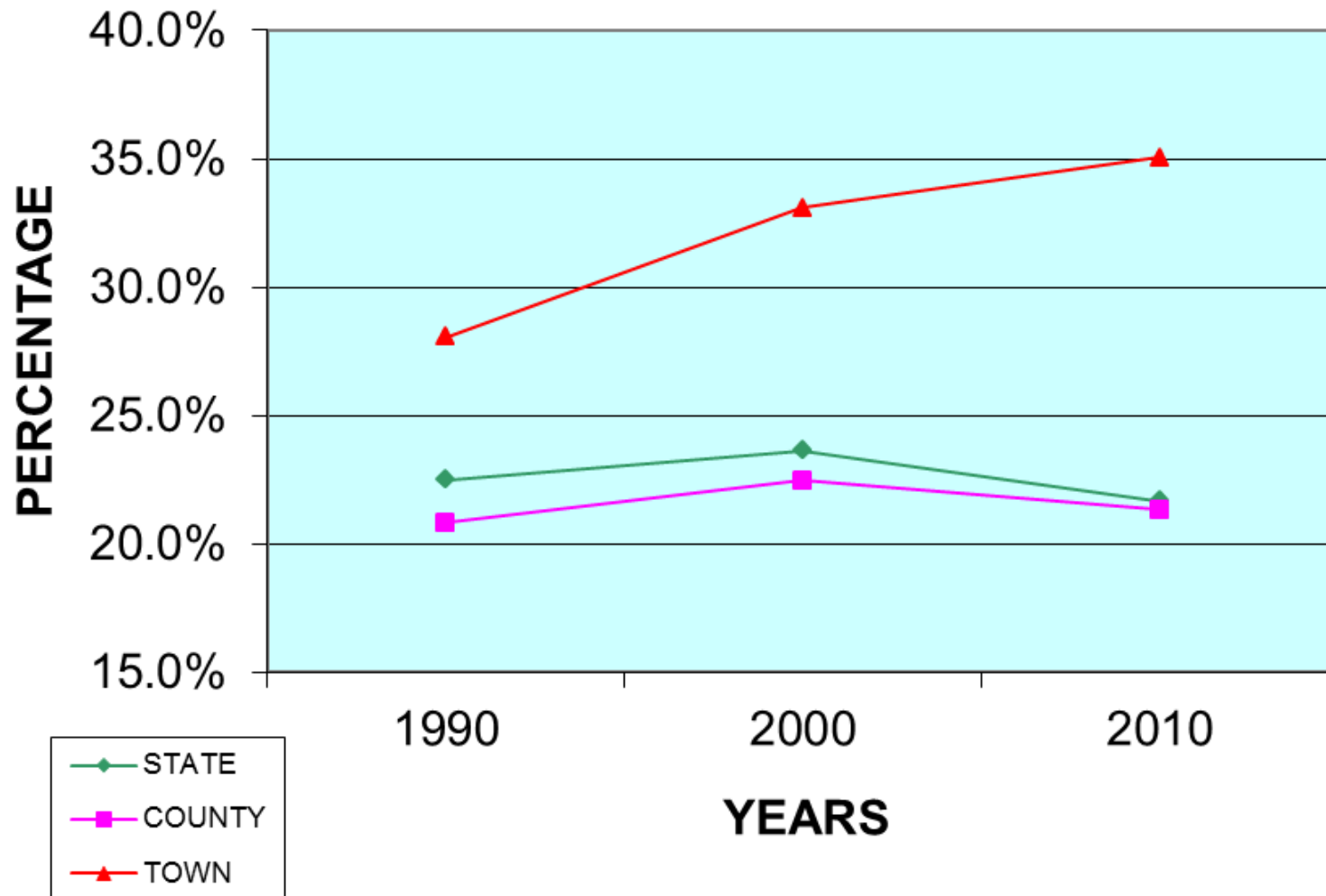
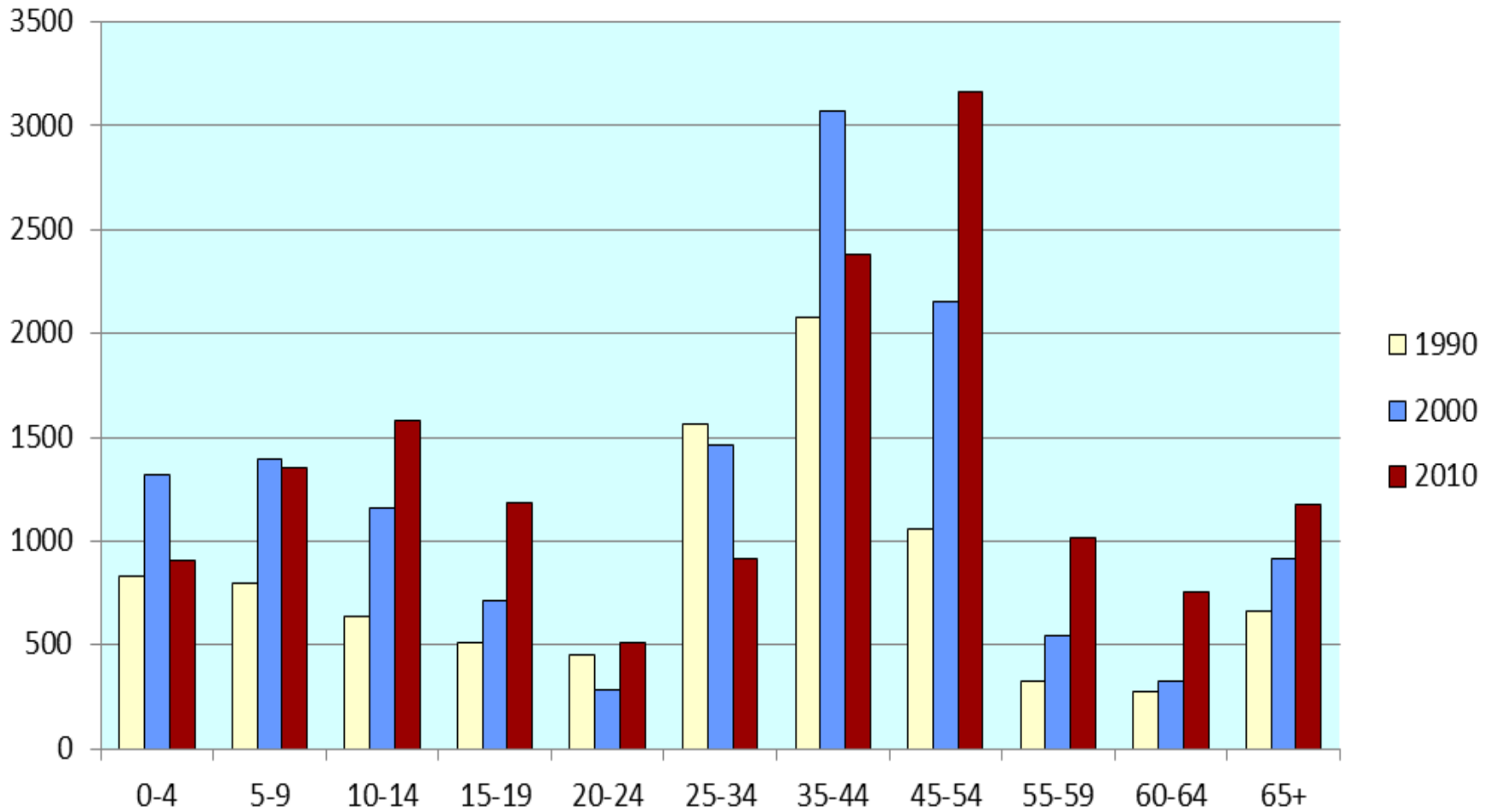


TABLE 3 AGE COHORT – HOPKINTON, MA

AGE	SIZE OF COHORT			% CHANGE, 1990 TO 2000	
	1990	2000	2010		
0-4	828	1323	902	-31.8%	
5-9	793	1391	1352	-2.8%	
10-14	639	1156	1576	36.3%	
15-19	511	716	1188	65.9%	
20-24	453	286	508	77.6%	From 2000 to 2010
25-34	1566	1462	912	-37.6%	Ages 25-44 decreased
35-44	2079	3074	2377	-22.7%	-1247 -27.5%
45-54	1058	2154	3162	46.8%	
55-59	327	545	1015	86.2%	Ages 45 increased
60-64	275	322	755	134.5%	2172 55.2%
65+	662	917	1178	28.5%	
TOTAL:	9,191	13,346	14,925	11.8%	Town increased 6,794

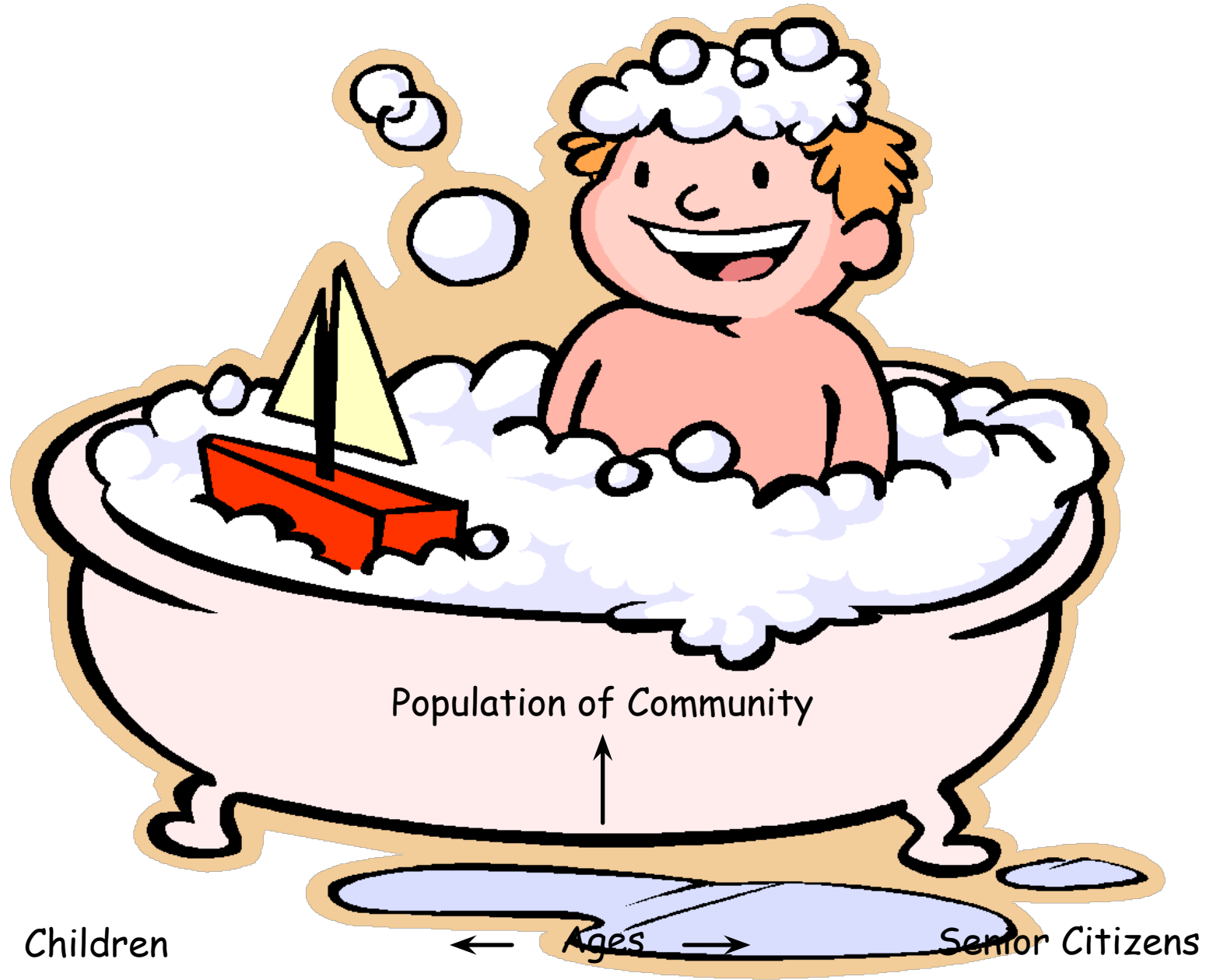
Due to changing sizes of age-cohorts, school populations often do not match with rising/shrinking population totals of communities

AGE COHORTS: 1990, 2000, 2010 - HOPKINTON



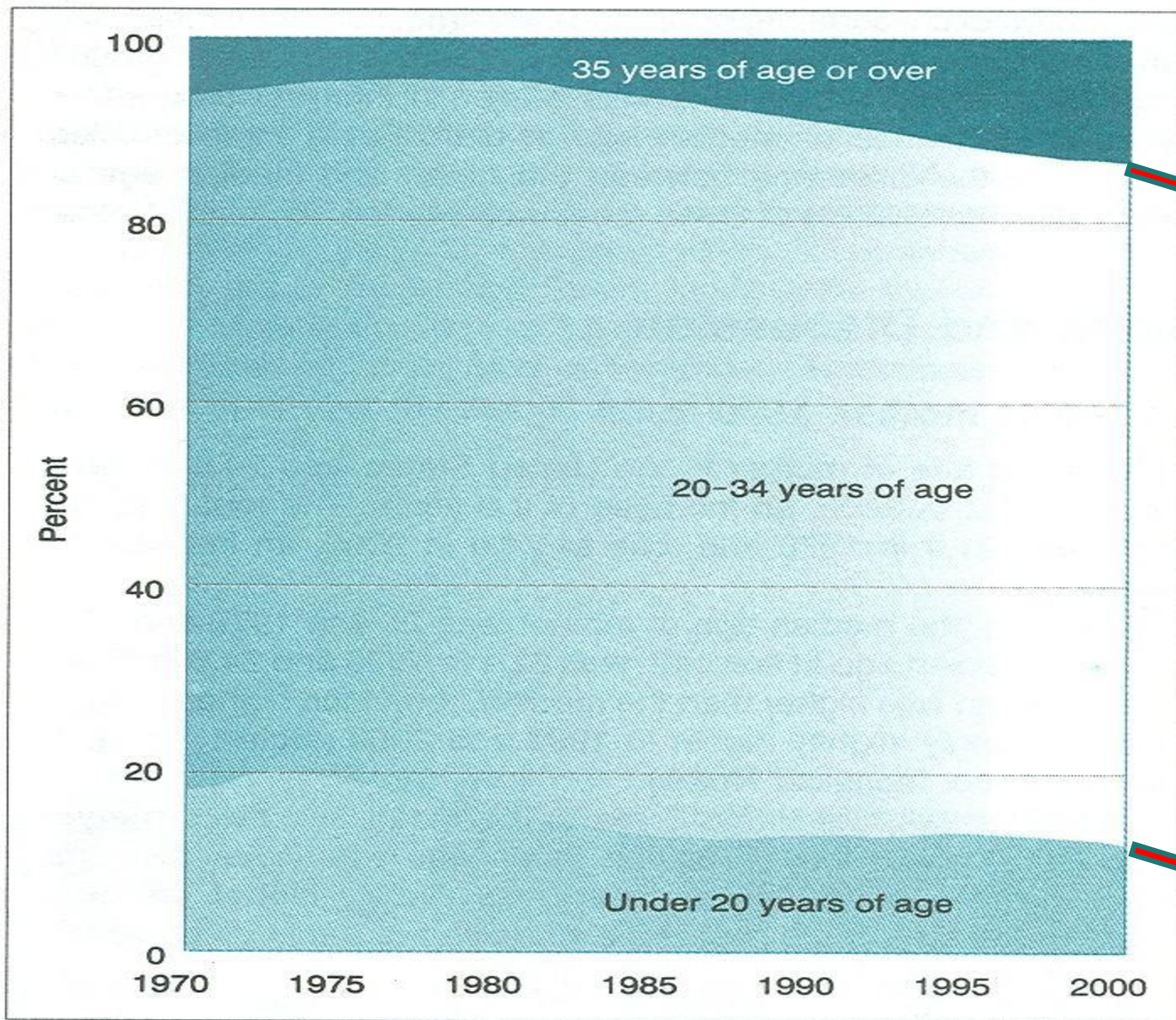
Note 2010 changes: decline in ages 0-4; decline in ages 25-44 (responsible for almost 90% of births); substantial increases above age 45 (older persons eventually may seek to “downsize” their residence

*



Due to changing sizes of age-cohorts, school populations often do not match with rising/shrinking population totals of communities

*



Trending of both lines continue through 2010+ ...

Figure 1. Percent of all live births by age of mother, 1970–2000

TABLE 4

PERCENTAGE OF K-12 ENROLLMENT IN POPULATION

STATE OF MASSACHUSETTS:

	POPULATION	PUBLIC K-12 ENROLLMENT*	% K-12 ENR. IN POPULATION
1990	6,016,425	828,816	13.8%
2000	6,349,097	959,655	15.1%
2010	6,547,629	926,940	14.2%

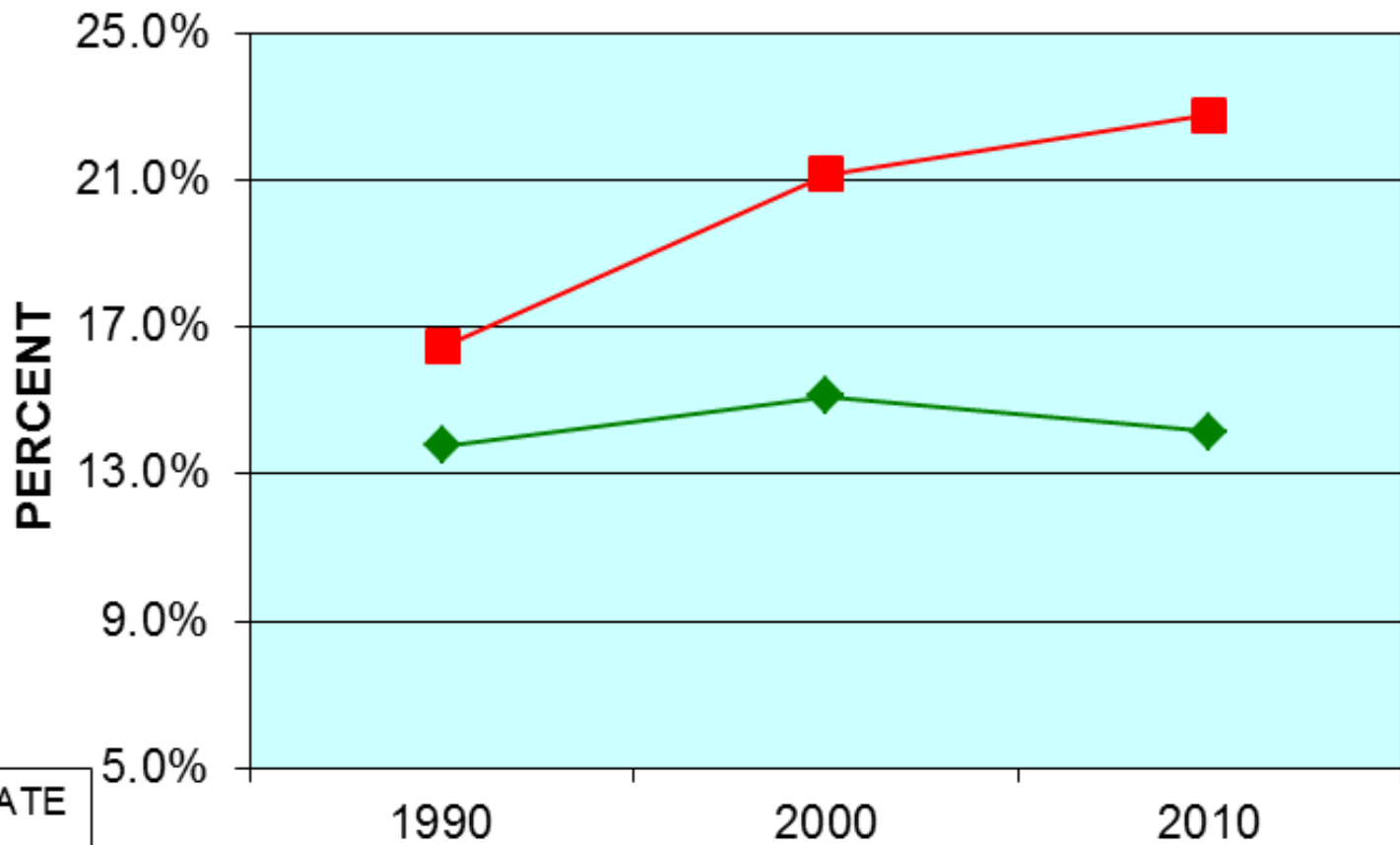
* Massachusetts Department of Elementary and Secondary Education

TOWN OF HOPKINTON:

	POPULATION	PUBLIC K-12 ENROLLMENT	% K-12 ENR. IN POPULATION
1990	9,191	1,514	16.5%
*2000	13,346	2,825	21.2%
*2010	14,925	3,403	22.8%

*Plus 51PK in 2000 and 51PK in 2010

PERCENTAGE K-12 ENROLLMENT IN HOPKINTON POPULATION



*

TABLE 6 NUMBER OF DWELLING UNITS AND PERSONS PER UNIT

STATE OF MASSACHUSETTS:

	NO. OF DWELLING UNITS	% CHANGE	PERSONS PER UNIT
1990	2,472,711		2.4
2000	2,621,989	6.0%	2.4
2010	2,808,254	7.1%	2.3

MIDDLESEX COUNTY:

	NO. OF DWELLING UNITS	% CHANGE	PERSONS PER UNIT
1990	543,796		2.6
2000	576,681	6.0%	2.5
2010	612,004	6.1%	2.5

TOWN OF HOPKINTON:

	NO. OF DWELLING UNITS	% CHANGE	PERSONS PER UNIT
1990	3,305		2.8
2000	4,548	37.6%	2.9
2010	5,128	12.8%	2.9

CHANGES IN HOUSING GROWTH, 1990 TO 2010 HOPKINTON

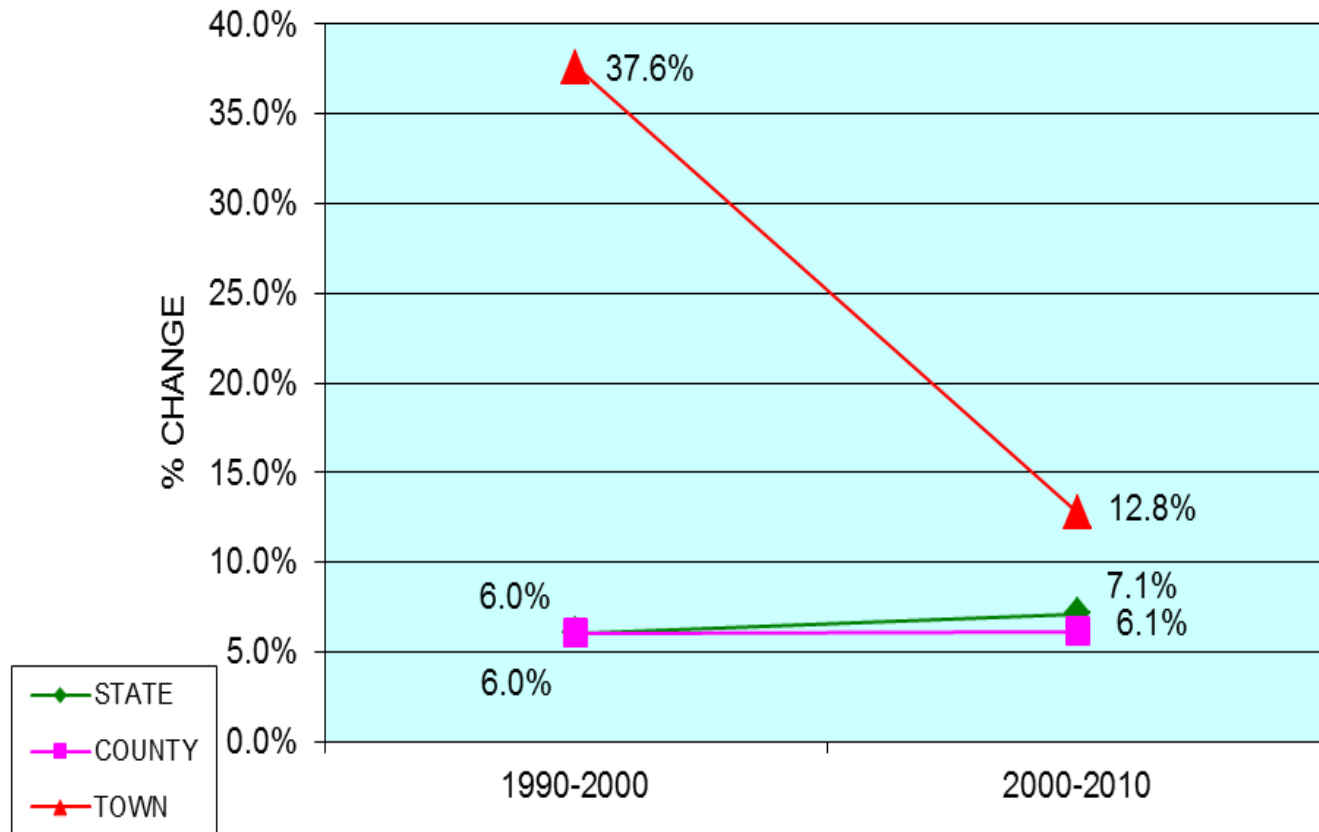


TABLE 6A

HOPKINTON HOUSING DETAIL

2000 Dwellings	Occupied	Vacant	2010 Dwellings	Occupied	Vacant
4,548	4,444	104	5,128	4,957	171
	98% occupied	27 for seasonal use		97% occupied	41 for seasonal use
	90% owner occupied	4% rental vacancy rate		90% owner occupied	6.2% rental vacancy rate
	10% renter occupied			10% renter occupied	

Source: U.S. Census, Tables DP-1; the U.S. Census tallied 580 more dwellings in 2010 than existed in 2000, however Hopkinton issued 740 permits in the decade from 1999 through 2008 (assumes 24 months construction time prior to completion) a difference of 160 dwellings – accounted for by subtracting demolitions and dwellings not built

*

TABLE 6B

HOPKINTON BUILDING PERMITS

	Units			Units		
Year	S-F	Multi-	Year	S-F	Duplex	Multi-
1970	19	64	1992	99		32
1971	20	64	1993	152		10
1972	80		1994	190		
1973	31		1995	161		
1974	35		1996	103		
1975	37		1997	95		
1976	59		1998	159		
1977	96		1999	182		
1978	105		2000	129		
1979	82		2001	69		
1980	55		2002	65		
1981	52		2003	49		
1982	43		2004	78		
1983	74		2005	51		
1984	86	36	2006	51		
1985	143		2007	37		8
1986	176	5	2008	29		
1987	175	20	2009	36		4
1988	102		2010	37	16	72
1989	70	6	2011	33		41
1990	1		2012	36	2	
1991	24		2013	11	4	

*

Sources: 1970-79 Building Dept.; 1980 on HUD, some years differ slightly; 1980 on = 1-11 SF demolitions; 2013 to April 30

TABLE 6C HOPKINTON HOUSING

Year	# Single-Family	Median Sales Price Single-Family	# Condo Units
1993	280	\$220,000	54
1994	296	\$240,000	46
1995	216	\$280,000	46
1996	233	\$278,000	59
1997	216	\$275,000	51
1998	259	\$290,000	51
1999	361	\$380,000	47
2000	265	\$385,000	52
2001	203	\$430,000	32
2002	208	\$484,000	46
2003	189	\$475,000	28
2004	243	\$530,000	46
2005	242	\$559,000	44
2006	225	\$645,000	48
2007	207 (43)	\$585,000	45 (15)
2008	136 (35)	\$558,000	34 (9)
2009	152 (29)	\$485,000	31 (5)
2010	156 (34)	\$520,000	55 (17)
2011	150 (22)	\$519,000	37 (6)
2012	197 (40)	\$535,000	45 (13)

2013 through April 30, 44 S-F homes sold, and 13 condos.
Numbers in parenthesis are sales through April 30

*

HOPKINTON, MA

"SECOND-SEMESTER "FLEX" 2006-2013

Potential Adjustments to NESDEC Projection for subsequent Grades in 2013-14?

SCHOOL YEAR	K	1	2	3	4	5	6	7	8	9	10	11	12	K-12 TOTAL
2006-07	233	256	239	298	296	298	261	278	271	254	226	242	202	3354
3/1/2007	232	257	240	297	293	297	263	280	271	255	226	245	200	3356
10/1-3/1	-1	1	1	-1	-3	-1	2	2	0	1	0	3	-2	2
2007-08	233	245	258	242	297	291	293	262	275	251	260	226	240	3373
3/1/2008	234	246	258	241	297	289	294	264	275	253	258	226	239	3374
10/1-3/1	1	1	0	-1	0	-2	1	2	0	2	-2	0	-1	1
2008-09	231	250	249	269	252	297	283	295	263	256	258	262	226	3391
3/1/2009	233	256	247	270	254	296	283	295	263	259	257	261	228	3402
10/1-3/1	2	6	-2	1	2	-1	0	0	0	3	-1	-1	2	11
2009-10	199	274	253	255	273	254	287	282	293	249	264	254	261	3398
3/1/2010	200	275	254	256	274	253	287	282	292	247	263	249	260	3392
10/1-3/1	1	1	1	1	1	-1	0	0	-1	-2	-1	-5	-1	-6
2010-11	231	228	284	254	261	276	250	290	282	288	244	257	258	3403
3/1/2011	229	231	282	255	257	276	248	291	282	290	244	257	258	3400
10/1-3/1	-2	3	-2	1	-4	0	-2	1	0	2	0	0	0	-3
2011-12	179	248	234	298	257	266	268	252	295	270	290	237	272	3366
3/1/2012	179	254	238	298	258	264	268	255	296	274	291	237	271	3383
10/1-3/1	0	6	4	0	1	-2	0	3	1	4	1	0	-1	17
2012-13	200	200	259	245	305	260	261	264	258	294	286	289	244	3365
3/1/2013	203	203	262	249	305	262	264	269	257	295	287	290	241	3387
10/1-3/1	3	3	3	4	0	2	3	5	-1	1	1	1	-3	22
4yr avg flex in FY09-12	0.5	1.5	-0.5	0.25	0.5	-0.25	0	0	0	0.75	-0.25	-0.25	0.5	2.75
2yr avg flex FY12-13	1.5	4.5	3.5	2	0.5	0	1.5	4	0	2.5	1	0.5	-2	19.5

TABLE 6D

PROPOSED HOPKINTON HOUSING

Single-Family

- Peloquin Estates 9 lots, 3 permits issued
- Elmwood III 59 lots, 34 permits issued
- Connelly Hill Estates 60 lots, 44 permits issued
- Spring Hill Estates 5 lots, roads built, no permits
- Hunter's Ridge 19 lots approval pending
- 203 Pond Street 12 lots litigation

Condominium Development

- Stagecoach Heights 44 units, 35 permits issued
Chapter 40B 1 3-BR unit; 43 2-BR units
- Maspenock Woods 31 units, no permits anticipated in 2013
- Hayden Woods 18 units, all 2-BR 1 40B unit site plan
application pending
- Forest Ridge 14 units, all 2-BR application submitted,
decision anticipated 7/13

TABLE 6D

PROPOSED HOPKINTON HOUSING

Legacy Farms

- Alta Legacy Farms 240 units, 240 permits issued
 25% 40B 156 1-BR; 84 2-BR, occupancy
beginning 7/13
- Southeast Villages 275 units; 170 2-BR townhouses, 82 3-BR
 simplex; 8 4-BR S-F homes, 7 3-BR S-F homes
- Legacy Farms North 425 unit potential, not yet designed

Proposed – Not yet approved

- The Acres at Hopkinton 280 units – rental – Chapter 40B
 25% affordable, requires zoning change

TABLE 6D

OTHER HOPKINTON HOUSING FACTORS *(cont'd)*

Accelerated Growth

Several existing factors indicate that Hopkinton may experience accelerated residential growth and housing turnover in the latter half of this decade.

These factors include the following:

- The most recent New England Economic Partnership (NEEP) Conference economic outlook analysis reported that within New England “housing is turning from an economic headwind into a tailwind”. Massachusetts and Vermont are expected to lead the way regarding new home construction
- The NEEP Conference of December , 2012 reported that twenty-four states experienced increases in median housing sales prices in 2012 , as compared to only four states which reported median price increases in 2011 – the May, 2013 NEEP Conference extended these points...

TABLE 6D

OTHER HOPKINTON HOUSING FACTORS *(cont'd)*

- The 2010 U.S. Census reported that Hopkinton's median age was 43.3 years and, over 40.9% of the town's residents were over the age of 45. Given this data, it is likely that, over the next several years, increasing numbers of Hopkinton homeowners will become "empty nesters".

- As the housing market continues to become more robust, many members of the "baby boom" cohort are, according to regional and local realtors, likely to downsize to smaller homes, vacating three-and four-bedroom homes which then could be inhabited by families with school-aged children. According to local realtors, this movement is presently evident in Hopkinton.

- The close proximity and availability of condominium housing in Hopkinton and surrounding communities will provide opportunities which will enable "baby boomers" to downsize and still remain close to friends and family.

TABLE 7

NUMBER OF K-12 STUDENTS PER DWELLING UNIT

STATE OF MASSACHUSETTS:

	# OF HOUSING UNITS	PUBLIC K-12 ENROLLMENT	K-12 STUDENTS PER UNIT
1990	2,472,711	828,816	0.34
2000	2,621,989	959,655	0.37
2010	2,808,254	926,940	0.33

2010 Number of Households with individuals under 18: 784,853
 2010 Percentage of Households with individuals under 18: 28.1%

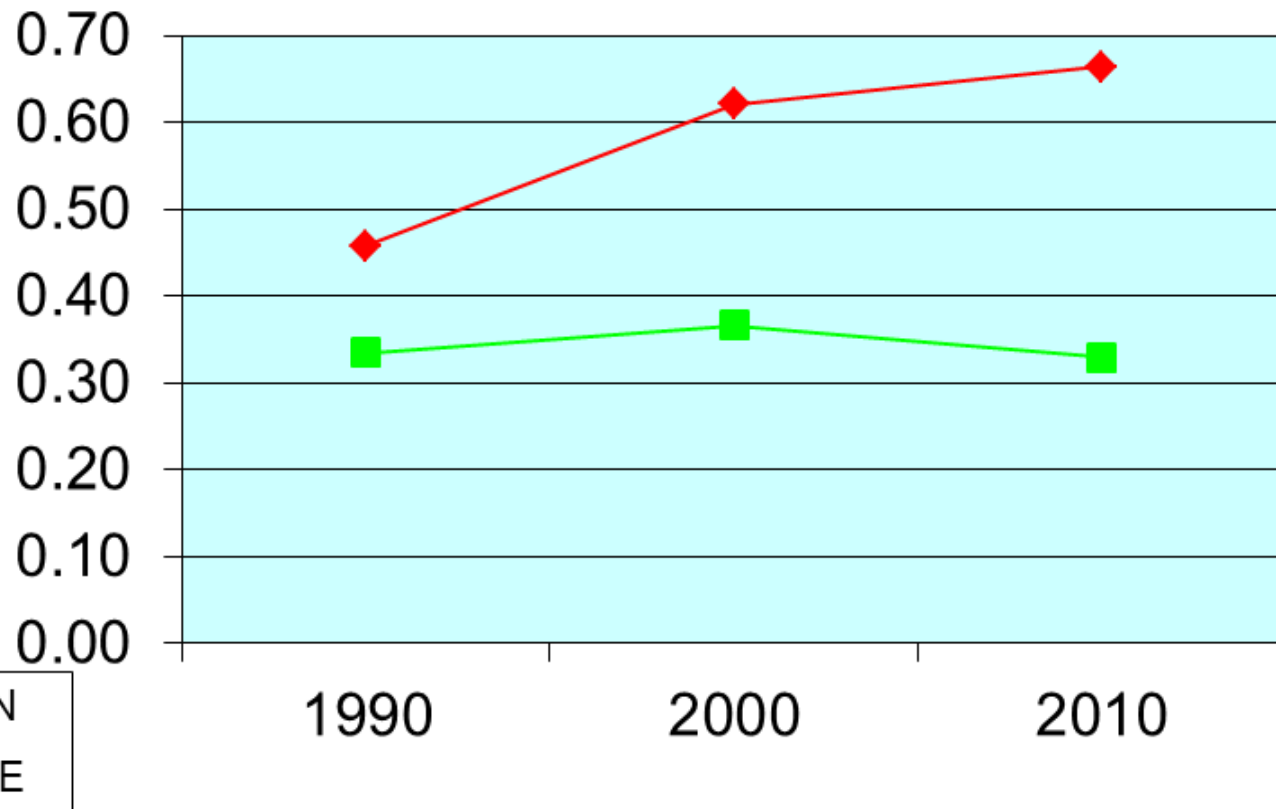
TOWN OF HOPKINTON:

	# OF HOUSING UNITS	PUBLIC K-12 ENROLLMENT	K-12 STUDENTS PER UNIT
1990	3,305	1,514	0.46
2000	4,548	2,825	0.62
2010	5,128	3,403	0.66

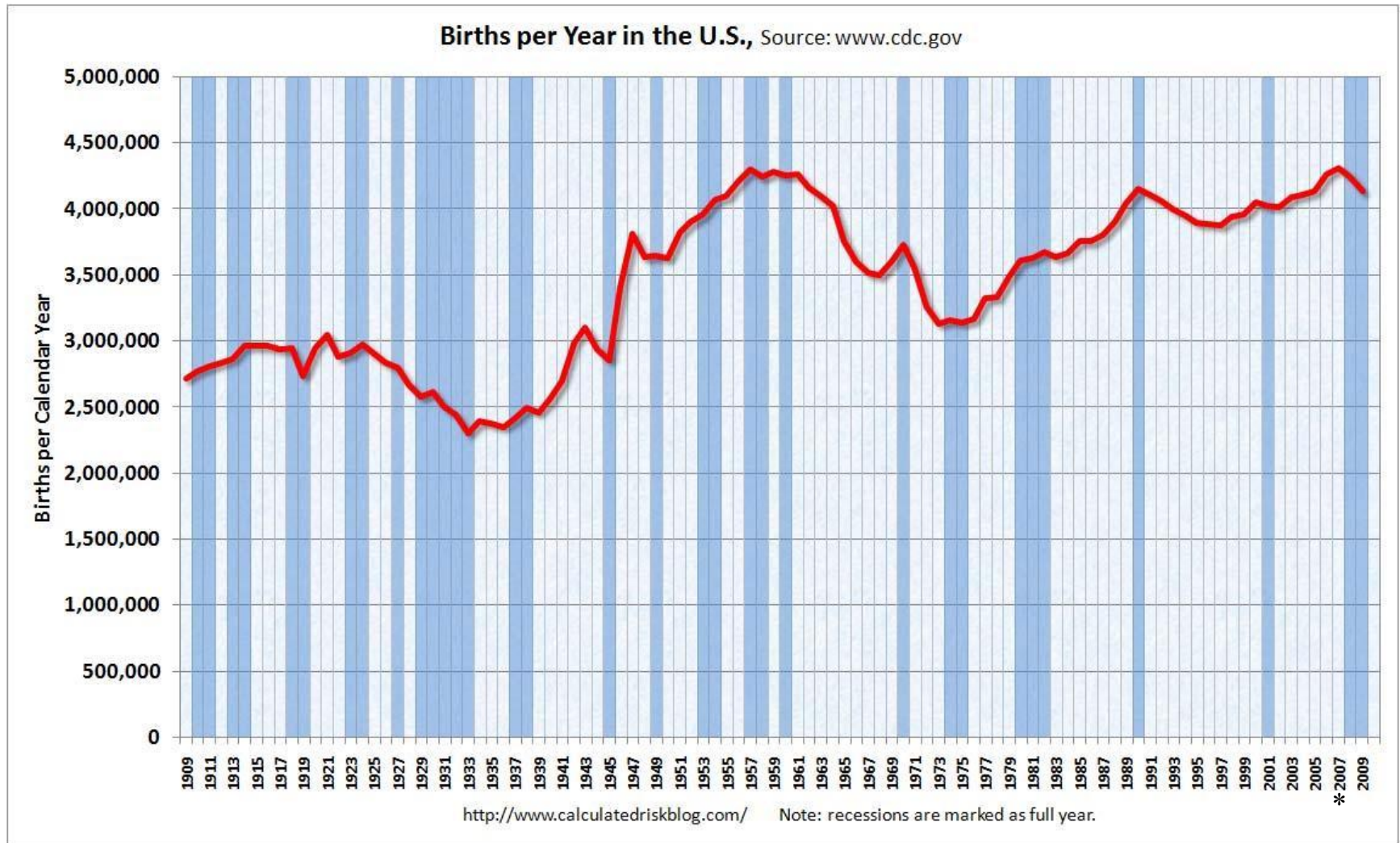
2010 Number of Households with individuals under 18: 2,119
 2010 Percentage of Households with individuals under 18: 41.4%

*

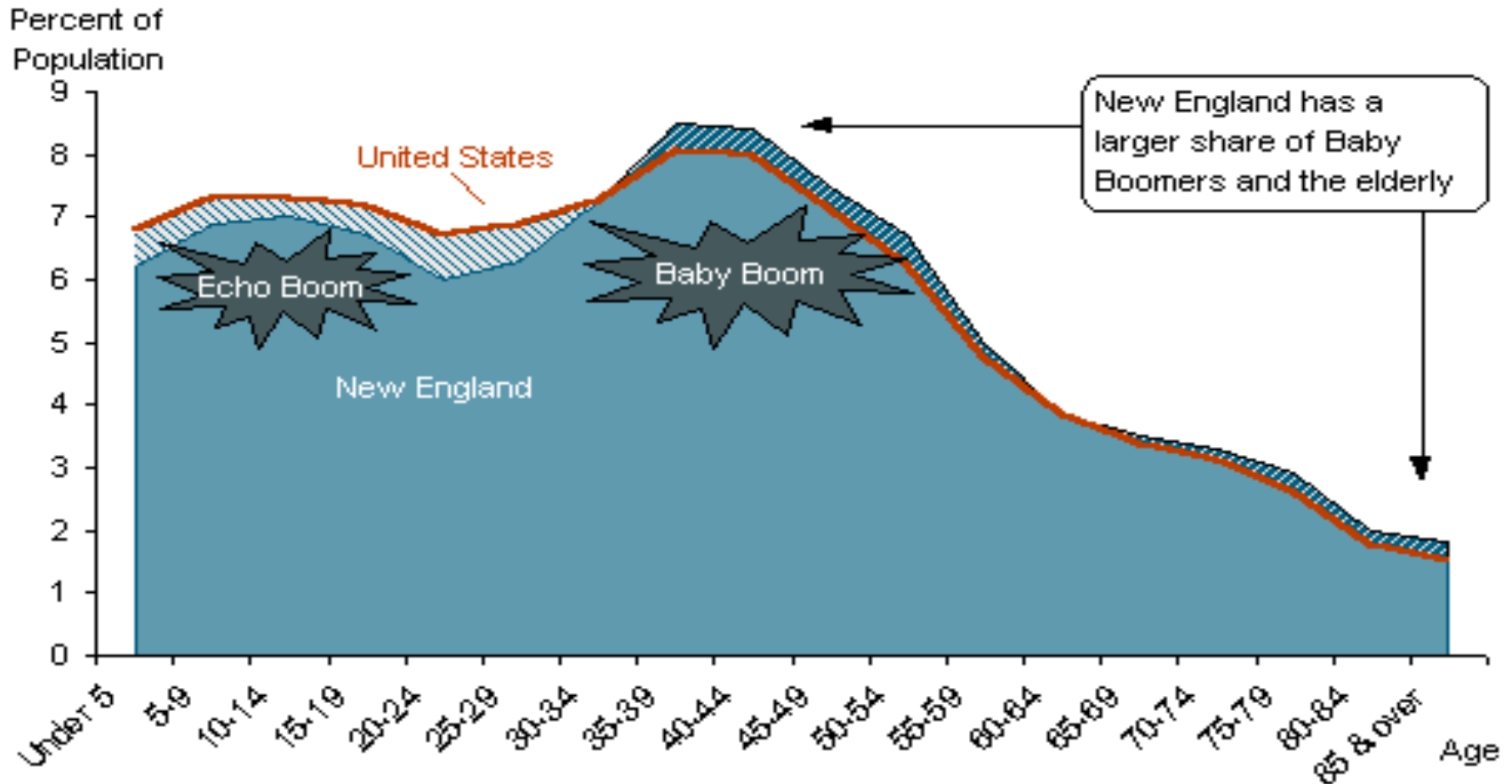
K-12 PUBLIC SCHOOL STUDENTS PER HOPKINTON DWELLING UNIT



100 YEARS OF U.S. BIRTHS AND ECONOMIC CYCLES, 1909-2009

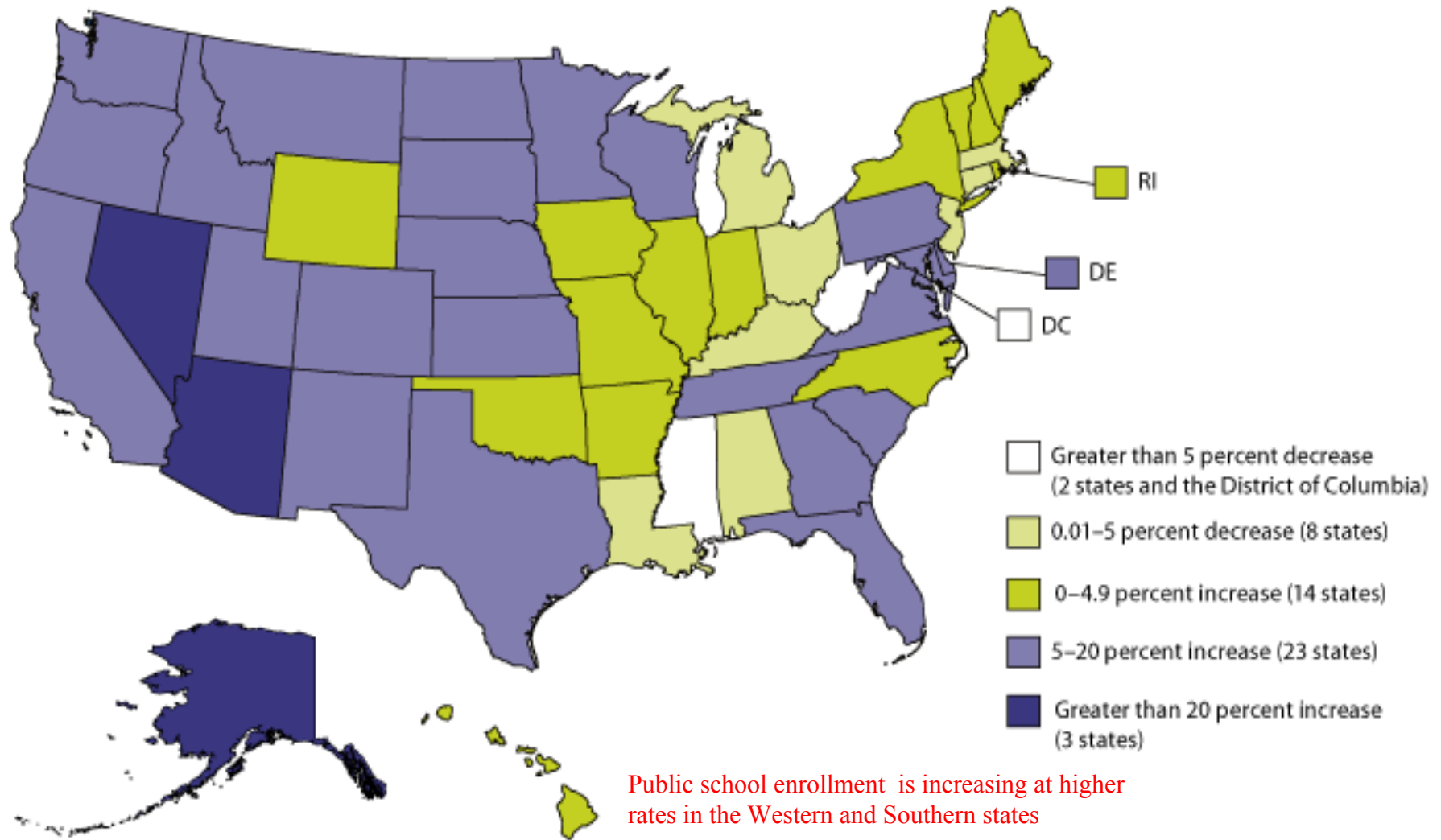


U.S. AND NEW ENGLAND IN 2000: AGE COHORT COMPARISON



Source: Federal Reserve Bank of Boston; used with permission

Figure 3-2: Projected percent change in public school enrollment in grades prekindergarten (preK) through 12, by state or jurisdiction: Between school years 2010-11 and 2021-22



NOTE: The most recent year of actual data is 2010-11, and 2021-22 is the last year for which projected data are available. For more information on projections, see NCES 2012-XXX.

SOURCE: U.S. Department of Education, National Center for Education Statistics, Common Core of Data (CCD), "State Nonfiscal Survey of Public Elementary/Secondary Education," 2010-11; and Public State Elementary and Secondary Enrollment Model, 1980-2010.

*

K-12 PROJECTIONS TO 2017-18...and BEYOND

Starting in 2011-12, enrollments began to decline – first, driven by fewer families moving in, with fewer births now beginning to strengthen the decline. Now, births continue to be a concern, yet in-migration of additional new families suggest that enrollment declines will be less severe

	K-5	6-8	9-12	K-12 TOTAL
2010-11	1,534	822	1,047	3,403
2012-13	<u>1,469</u>	<u>783</u>	<u>1,113</u>	<u>3,365</u>
	-65	-39	+66	-38

“Five-years-out,” with in-migration picking up in 2014-15, and returning to its earlier pace by 2015-16 – births still lagging

	K-5	6-8	9-12	K-12 TOTAL
2017-18	1,259	770	1,137	3,166

“Ten-years-out,” with a continuation of somewhat fewer births, yet steady in-migration related to the additional housing

	K-5	6-8	9-12	K-12 TOTAL
2022-23	1,288	675	1,055	3,018

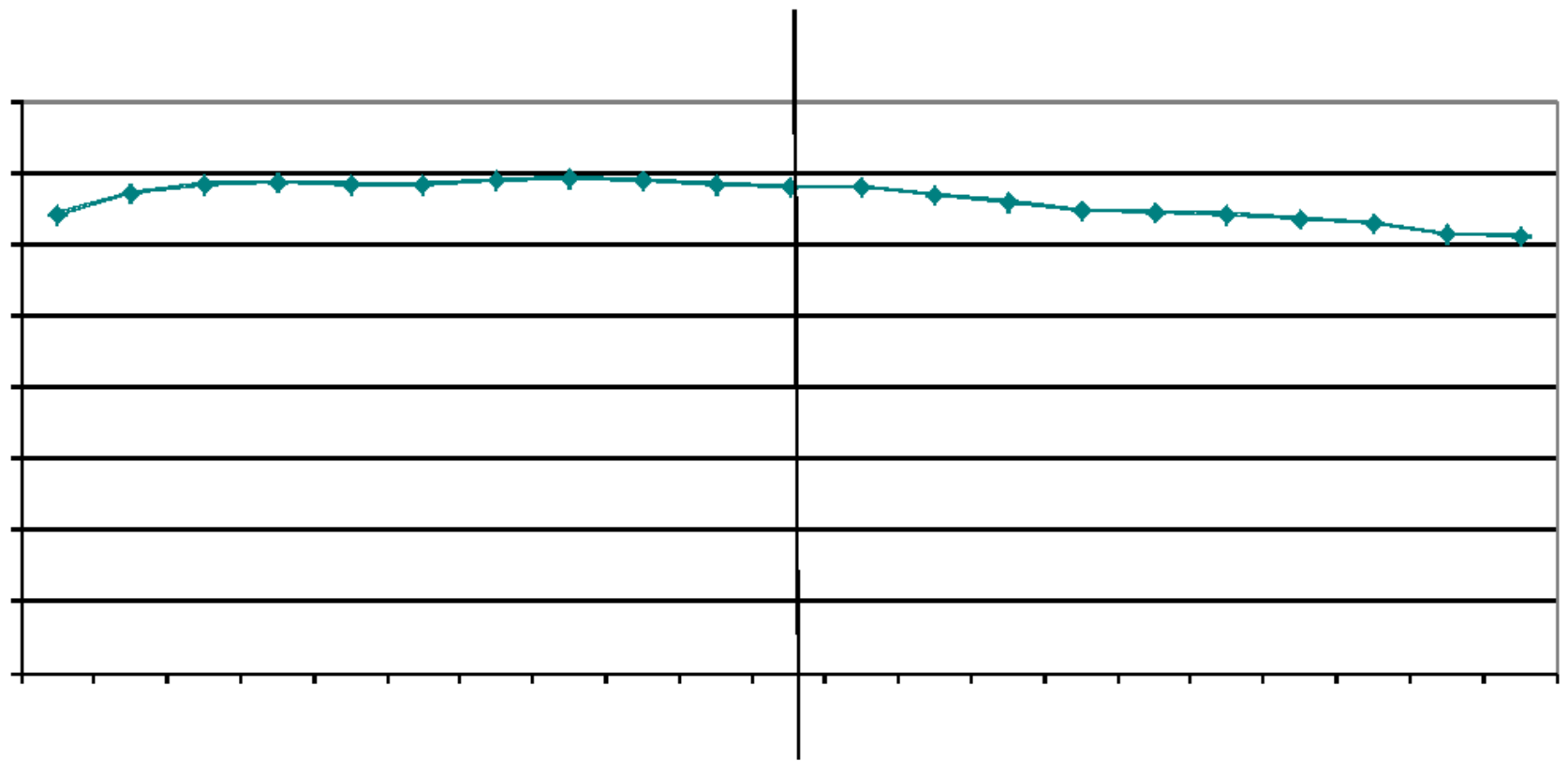
Hopkinton Variances: Projected v. Actual Enrollment in Kind. & Grades

School Year	Projected Kindergarten	Actual Enrol Kindergarten	Proj-Actual Variance	Projected Grades 1-12	Actual Enrol Grades 1-12	Proj-Actual Variance
1995-96	229	224	-5	1839	1816	-23
1996-97	173	203	30	2001	1930	-71
1997-98	231	233	2	2074	2069	-5
1998-99	248	233	-15	2216	2243	27
1999-00	252	240	-12	2383	2396	13
2000-01	230	231	1	2545	2586	41
2001-02	260	250	-10	2725	2727	2
2002-03	266	271	5	2890	2892	2
2003-04	254	279	25	3046	3023	-23
2004-05	240	227	-13	3205	3128	-77
2005-06	268	233	-35	3185	3137	-48
2006-07	240	233	-7	3167	3121	-46
2007-08	228	233	5	3149	3140	-9
2008-09	223	231	8	3121	3160	39
2009-10	187	199	12	3165	3199	34
2010-11	196	231	35	3147	3172	25
2011-12	218	179	-39	3161	3187	26
2012-13	189	200	11	3120	3165	45

Average Variance in Kindergarten = 15; in Grades 1-12 total = 30.8

June *

Projected Enrollment PK-12, 2002-2022 Hopkinton, MA Historical & Projected Enrollment



*



New England School Development Council

28 Lord Road, Marlborough, MA 01752 ▶ Tel: 508-481-9444 ▶ www.nesdec.org

HOPKINTON'S PROJECTION UPDATE IN THE FALL MAY BE PIVOTAL... WITH NEW STUDENT AND HOUSING DATA AND THE PROJECTION OF AGE COHORTS FROM UMASS

**BEST WISHES
FROM THE NESDEC
HOPKINTON TEAM**

dkennedy@nesdec.org



*