

Center Elementary School Project – Site Alternatives

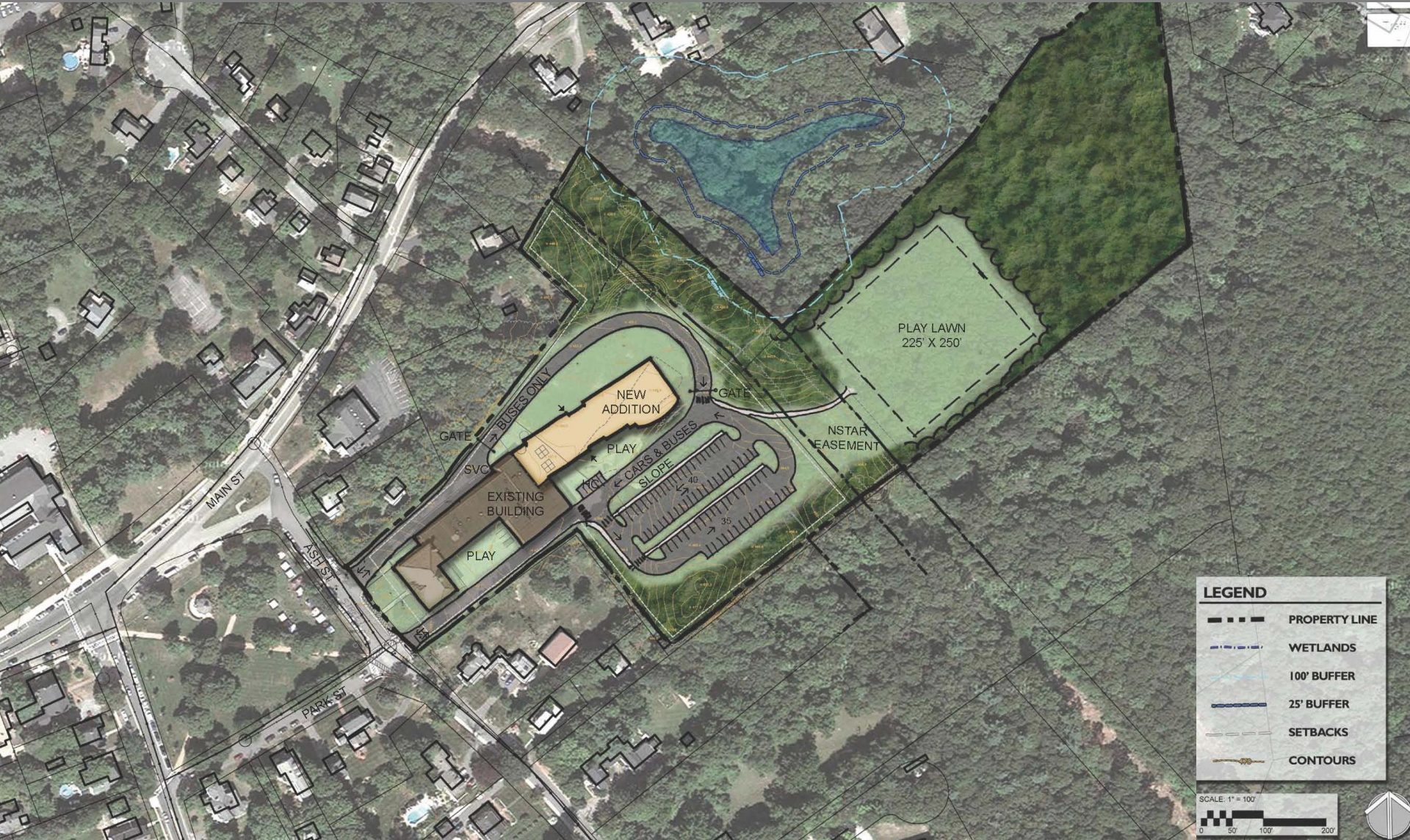
Important Note: The following slides are draft conceptual test fit depictions, to evaluate each site's potential for a new or expanded center school. There are currently 11 variations of school options (numbered 1 - 11) being considered at 4 different locations including the potential for new land acquisitions. The preliminary concepts are subject to change and not reflective of final design.

These conceptual test fits will be presented at the Community Forum on January 24, 2015 at the Middle School Library starting at 9:00am. Please join us at that meeting to give your feedback of these options and help shape the future of Hopkinton Early Education.

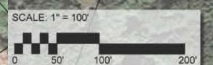
Conceptual test fit options produced by the DRA design team.

Center School Site – 1A

Renovate Existing / Build Addition



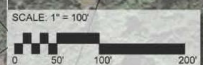
LEGEND	
--- (thick dashed)	PROPERTY LINE
--- (blue hatched)	WETLANDS
--- (light blue dashed)	100' BUFFER
--- (dark blue dashed)	25' BUFFER
--- (thin grey)	SETBACKS
--- (brown)	CONTOURS



Center School Site – 1A+H Renovate / Build Add. w/ 25 Ash St. Property



LEGEND	
	PROPERTY LINE
	WETLANDS
	100' BUFFER
	25' BUFFER
	SETBACKS
	CONTOURS



Center School Site – 1B

Renovate Historic Building / Build Addition



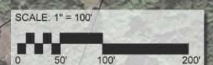
Center School Site – 1B+H

Reno. Historic / Add. w/ 25 AshSt. Property



LEGEND

- PROPERTY LINE
- WETLANDS
- 100' BUFFER
- 25' BUFFER
- SETBACKS
- CONTOURS

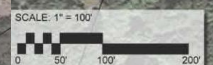


Center School Site – 1C

Renovate Historic Building / New School



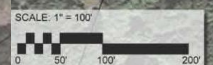
LEGEND	
	PROPERTY LINE
	WETLANDS
	100' BUFFER
	25' BUFFER
	SETBACKS
	CONTOURS



Center School Site – 1C+H Reno Hist / New School w/ 25 Ash St. Prop.



LEGEND	
	PROPERTY LINE
	WETLANDS
	100' BUFFER
	25' BUFFER
	SETBACKS
	CONTOURS



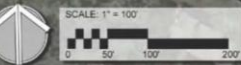
Elmwood School Site – 2A

Building Located in Wooded Area



PARKING	
58	EXISTING
131	PROPOSED
73	NET INCREASE

LEGEND	
	PROPERTY LINE
	WETLANDS
	100' BUFFER
	25' BUFFER
	SETBACKS
	CONTOURS



Elmwood School Site – 2B

Building Located in Ball Field Area



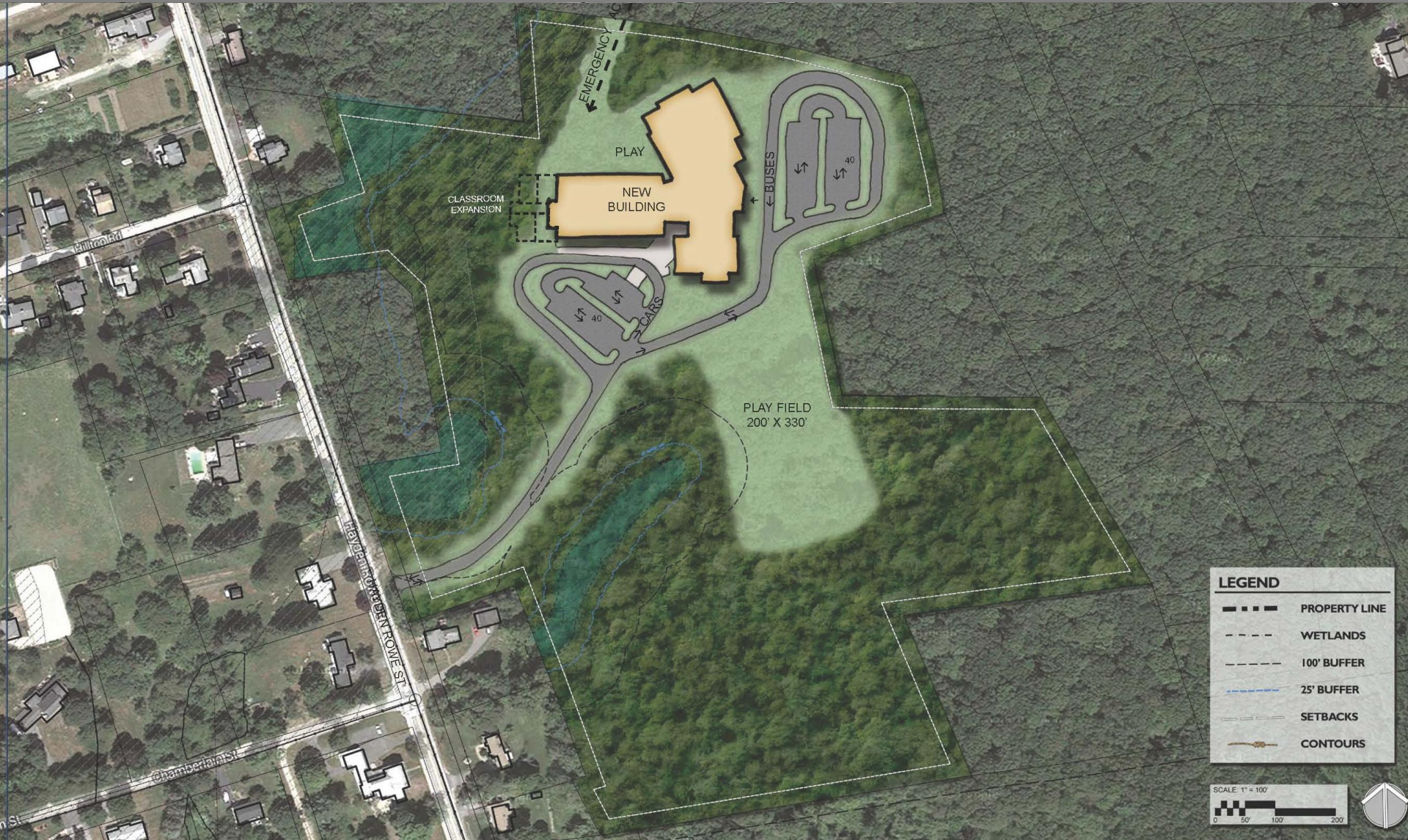
PARKING	
58	EXISTING
145	PROPOSED
87	NET INCREASE

LEGEND	
	PROPERTY LINE
	WETLANDS
	100' BUFFER
	25' BUFFER
	SETBACKS
	CONTOURS

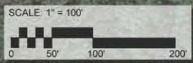


Irvine (Hayden Rowe) Site – 3A

Building to North



LEGEND	
	PROPERTY LINE
	WETLANDS
	100' BUFFER
	25' BUFFER
	SETBACKS
	CONTOURS



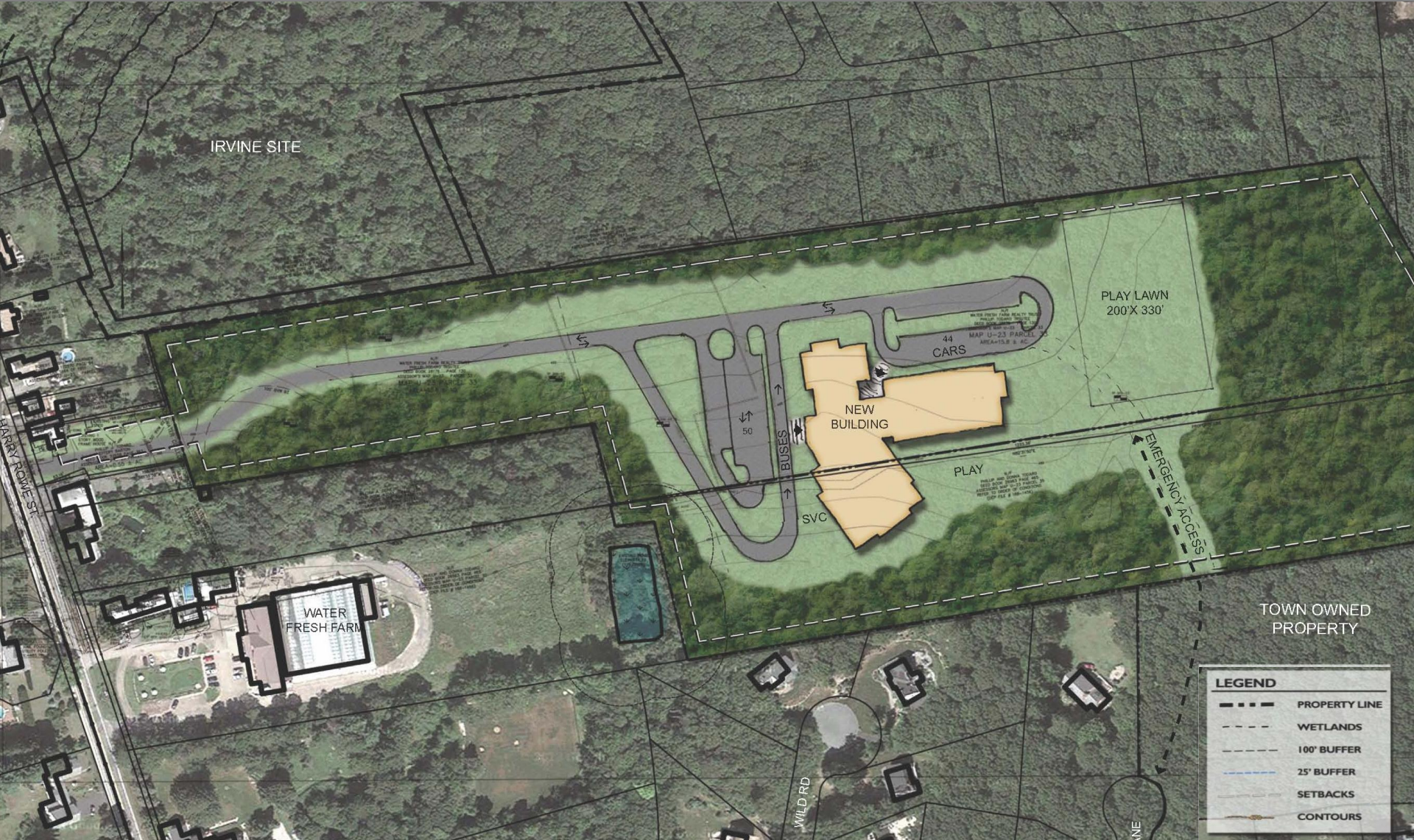
Irvine (Hayden Rowe) Site – 3B

Building to South



Todaro Site – 4A

Todaro Property Only (4B w/ Town Owned Property)



IRVINE SITE

PLAY LAWN
200'X 330'

44
CARS

NEW
BUILDING

PLAY

SVC

EMERGENCY ACCESS

TOWN OWNED
PROPERTY

LEGEND	
	PROPERTY LINE
	WETLANDS
	100' BUFFER
	25' BUFFER
	SETBACKS
	CONTOURS