

# Traffic & Safety Improvements on Hayden Rowe Street



## Town of Hopkinton

February 15, 2017

# AGENDA

- Project Need
- Project History
- Existing Conditions
- Crash History
- Potential Improvements
- **Hear your concerns**

# *PROJECT NEED*

- Safety Concerns
- Vehicle Speeds
- Operational Improvements
- School Traffic – Existing and Future
- Local and Through Traffic

# PROJECT HISTORY

- 2014 Educational Complex Study & Concepts
- 2015 Early Elementary School Study
- **Current Phase**
  - **Extend study limits – Grove Street to Milford Town Line**
  - **Data Collection**
  - **Public Outreach**
  - **Operational analysis of key intersections**
  - **Concept development**

# STUDY AREA

Hayden Rowe Street  
Grove Street to  
Milford Town Line



■ ■ ■ Project Corridor



Study Intersection (Signalized)



Study Intersection (Unsignalized)

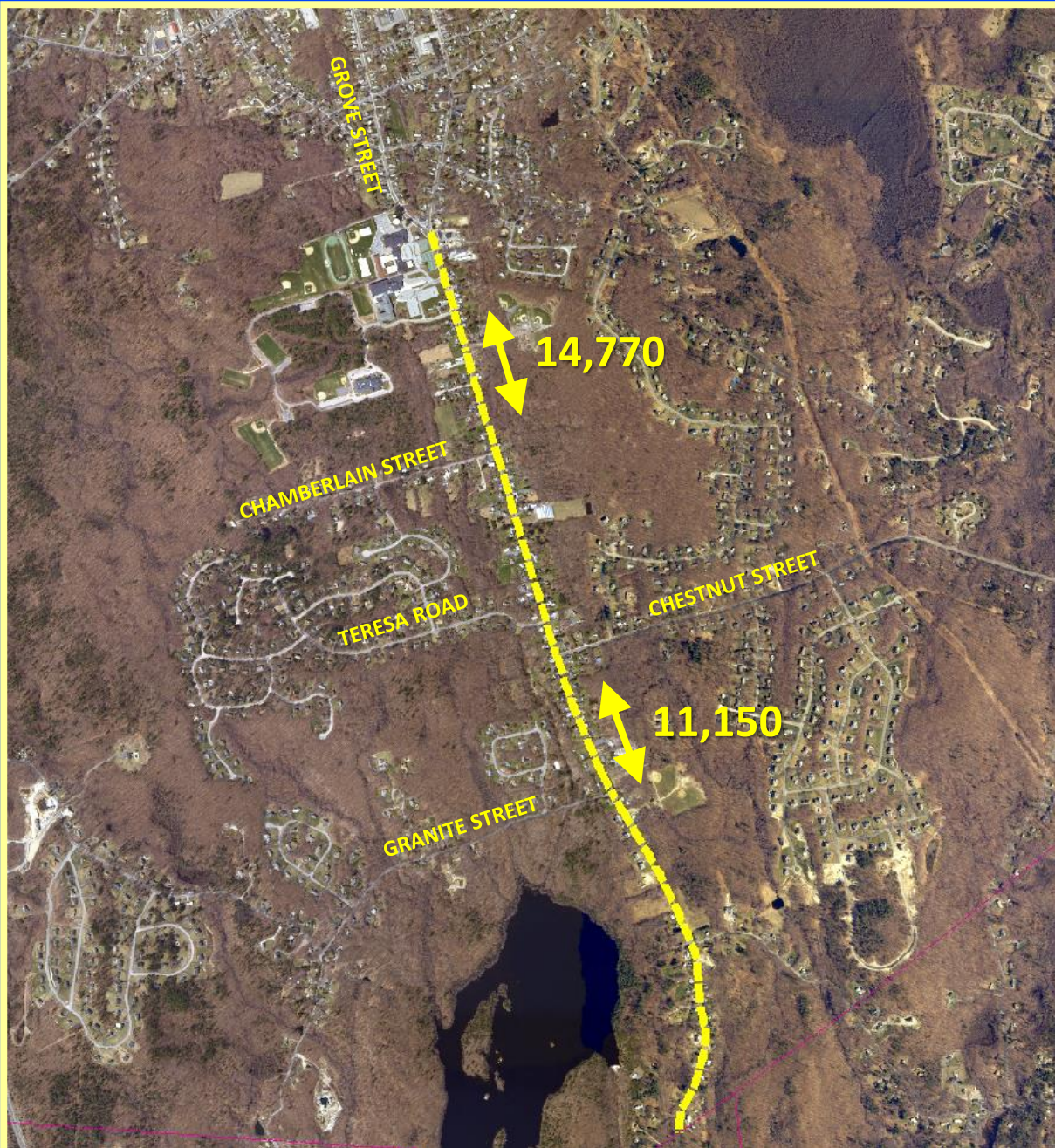




# TRAFFIC VOLUMES

*Average Daily Traffic*

- Minor Arterial roadway
- Town jurisdiction
- Width - 25 to 40 ft
- Right of Way - 40 to 60 ft

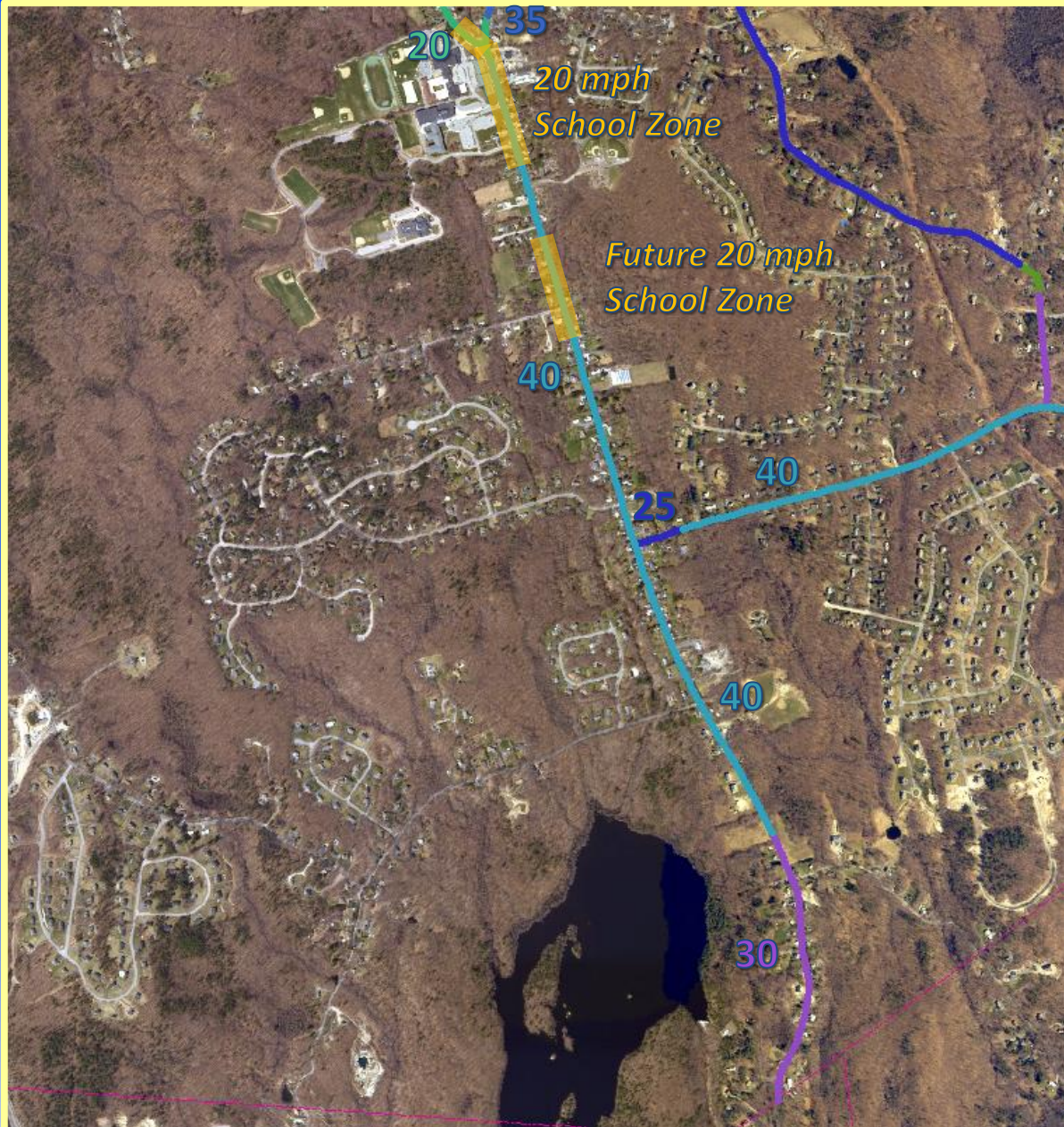




# VEHICLE SPEEDS

*Posted Speed*

- MassDOT approved Special Speed Regulations





# VEHICLE SPEEDS

85<sup>th</sup> Percentile Speed





# CRASH HISTORY

*Severe Pedestrian/  
Bicycle Crashes*

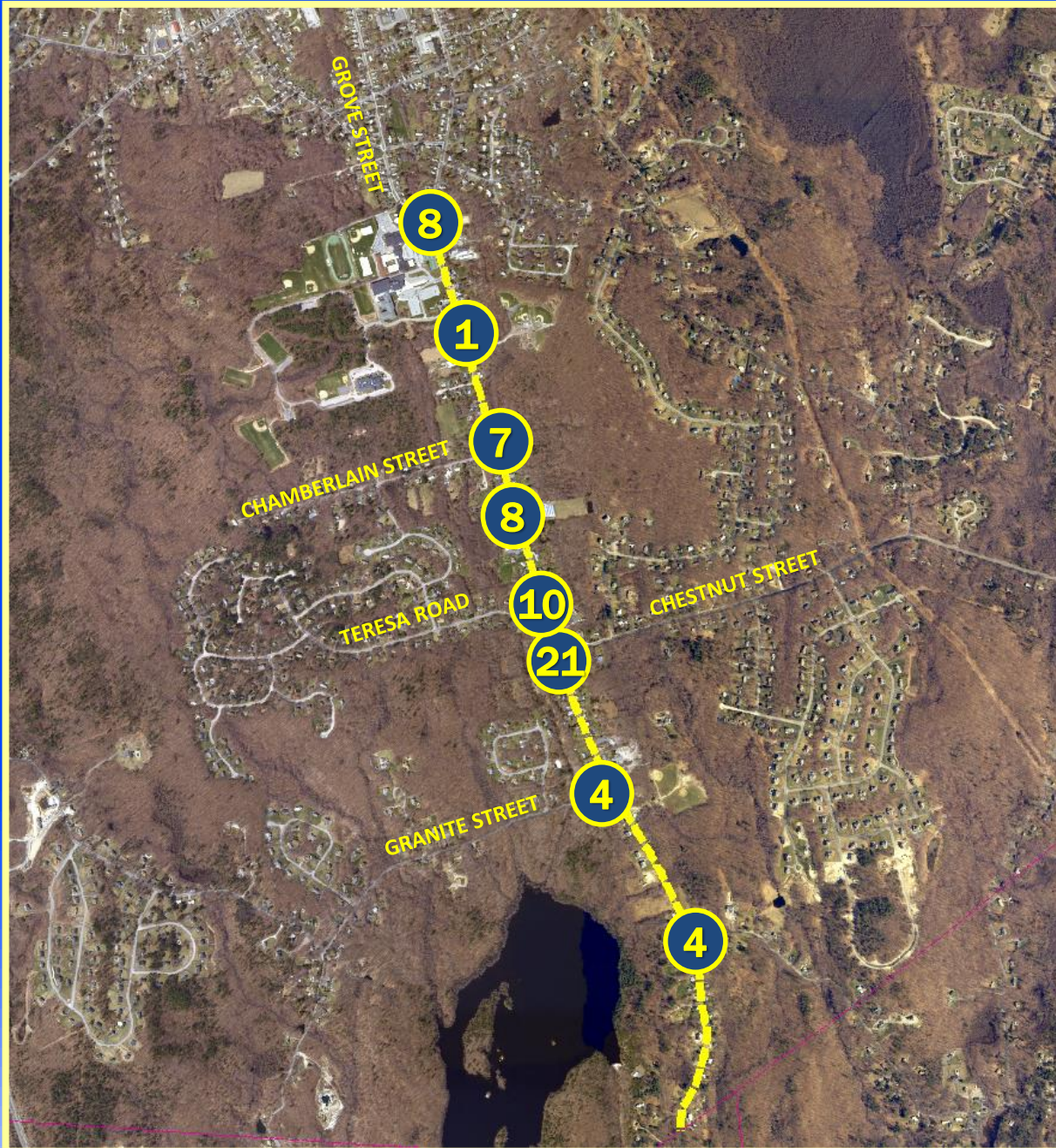




# CRASH HISTORY

## MassDOT Reported Crashes 2010-2014

- 63 crashes in five years
- **23 (37%) - young drivers**
- 13 (21%) with injuries
- One fatality
- One bicycle crash
- No pedestrian crashes





# CRASH HISTORY

## Contributing Factors

- Speed
- Limited Sight Distance
- Traffic Congestion
- Driver Inexperience



# TRAFFIC CALMING

**“The combination of mainly physical measures that reduce the negative effects of motor vehicle use, alter driver behavior, and improve conditions for non-motorized street users”** (*ITE Journal*, July 1997)

**“An attempt to strike a balance between vehicular traffic and everyone else who uses the street”** (*Slow Down, You’re Going Too Fast! The Community Guide to Traffic Calming*, Public Technology, Inc., 1998)



# TYPES OF TRAFFIC CALMING

- Vertical Deflection (Speed Humps, Raised Intersections)
- Horizontal Deflection (Chicanes, Chokers, Roundabouts)
- Narrowings
- Non-Physical Measures



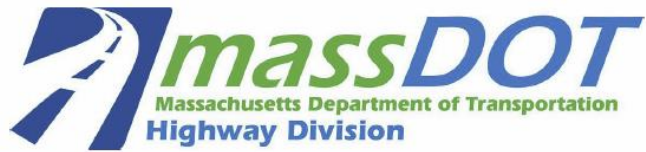
# TRAFFIC CALMING

## Traffic calming on major streets

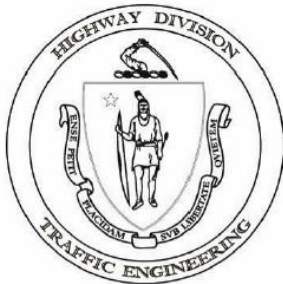
Traffic calming device	Major arterial	Minor arterial	Major collector	Neighborhood collector
Roundabouts	Yes	Yes	Yes	Yes
Traffic circles	No	No	No	Yes
Raised crosswalks	No	No	Yes	Yes
Curb extensions	No	Yes	Yes	Yes
Parking bays	Yes	Yes	Yes	Yes
Chicanes	No	Yes	Yes	Yes
Street closure	No	No	No	No
Half diverter	No	No	No	No
Diagonal diverter	No	No	No	No
Star diverter	No	No	No	No
Raised median	Yes	Yes	Yes	Yes
Pavement surface modification	Yes	Yes	Yes	Yes
Speed humps	No	No	No	No
Speed tables	No	No	No	Yes
Landscaped roadway	Yes	Yes	Yes	Yes
Midblock neckdown	No	No	Yes	Yes
Angled slow point with median	No	No	Yes	Yes



# SPEED LIMITS

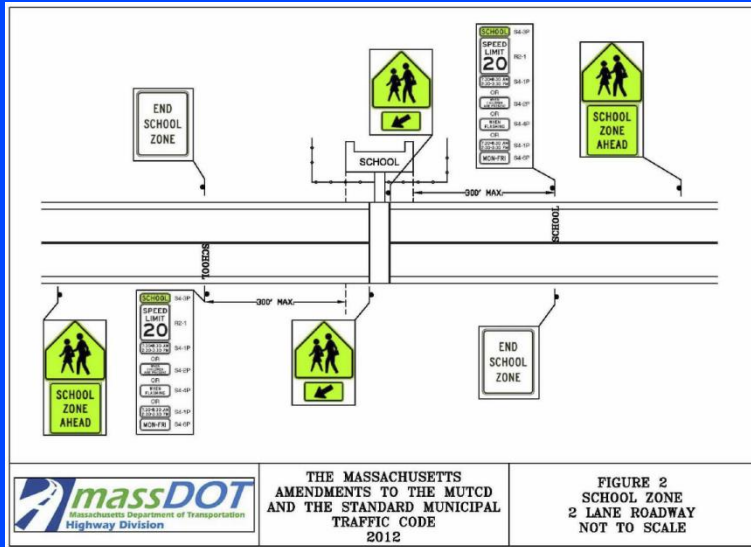


PROCEDURES FOR SPEED ZONING  
ON  
STATE AND MUNICIPAL ROADWAYS  
2012



- Must be approved by MassDOT
- Requires detailed engineering study
- **Based on existing 85<sup>th</sup> Percentile speed**
- Cannot post a Speed Limit sign without following this procedure
- **Advantageous to slow traffic prior to executing study.**

# SCHOOL ZONES



- May be posted up to 300 ft from a school building (Grades 1-8 only)
- Students must have access to a marked, unsignalized crosswalk
- 20 mph speed limit only in effect when students are present





# POTENTIAL IMPROVEMENTS

## Short Term Measures

Radar  
Feedback Signs



Rapid Flashing  
Beacons



Signs &  
Pavement Markings

# POTENTIAL IMPROVEMENTS

## Long Term Capital Improvements



Curb Extension



Signalization/Turn Lanes

➤ May often require roadway widening



Medians

➤ Requires sufficient roadway width

# POTENTIAL IMPROVEMENTS

## Long Term Capital Improvements



Signalization

- Meets Signal Warrants
- Reduces angle crashes
- Improves operations
- Provide Gaps
- Requires minor widening for turn lanes
- Opportunity for Median/ Gateway treatment



# NEXT STEPS

## Current Phase

- **Data Collection**
- **Public Workshop #1**
- **Conceptual Design**
- **Public Workshop #2**
- **Refine Concept**
- **Cost Estimates**
- **Town Meeting**

## Next Phase

- **Topographic Survey**
- **Preliminary Design**
- **Public Workshop #3**
- **Final Design**
- **Project Award and Construction**