

Traffic & Safety Improvements on Hayden Rowe Street

Public Workshop #2 Town of Hopkinton

March 29, 2017



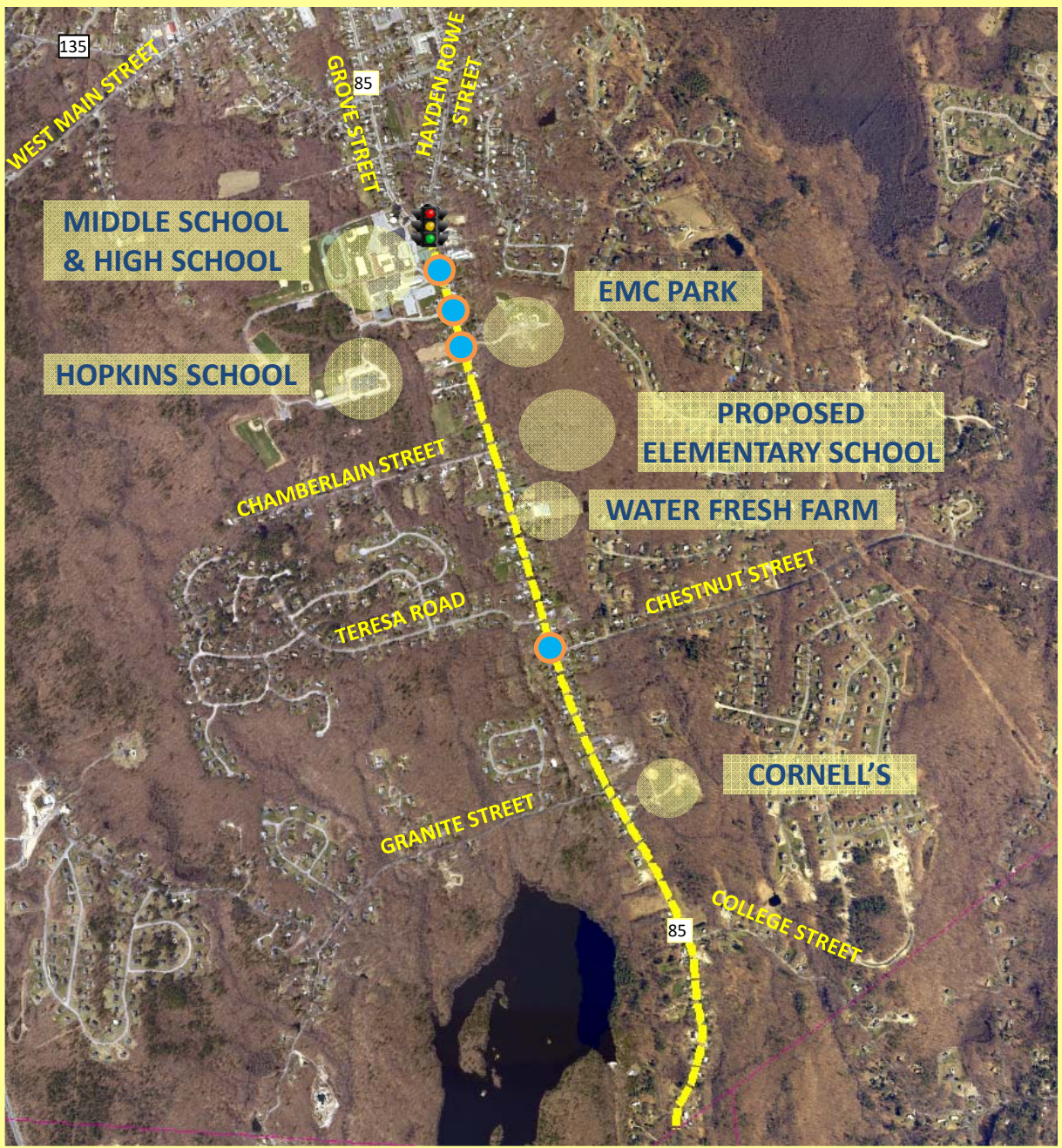
AGENDA

- Recap of Workshop #1
- Project Need / Goals
- Overview of Proposed Improvements
 - *Short Term Improvements*
 - *Long Term Improvements*
- Order of Magnitude Costs
- Next Steps
- Group Discussion

STUDY AREA

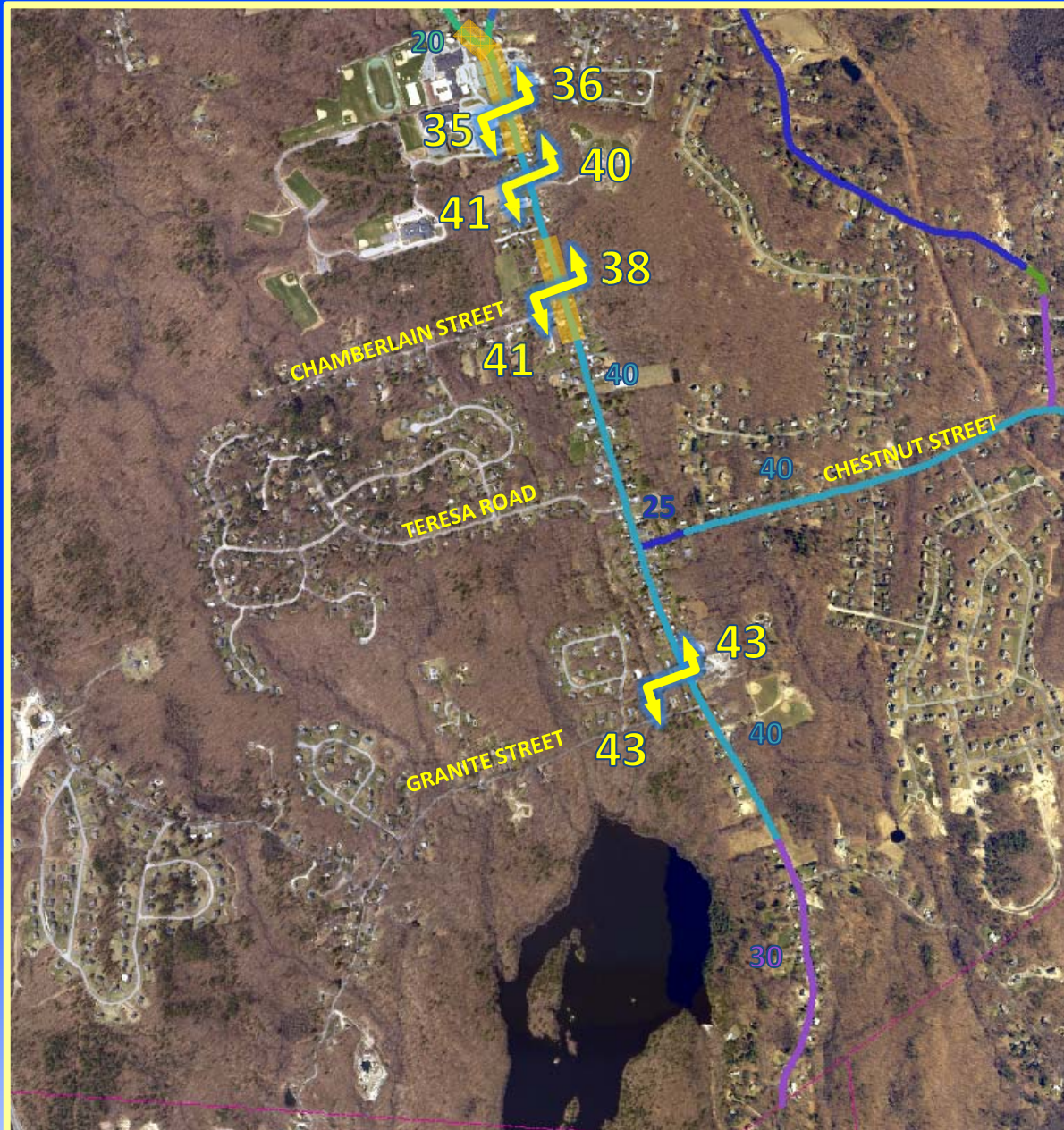
Hayden Rowe Street
Grove Street to
Milford Town Line

- ■ ■ ■ Project Corridor
- 🚦 Study Intersection (Signalized)
- Study Intersection (Unsignalized)



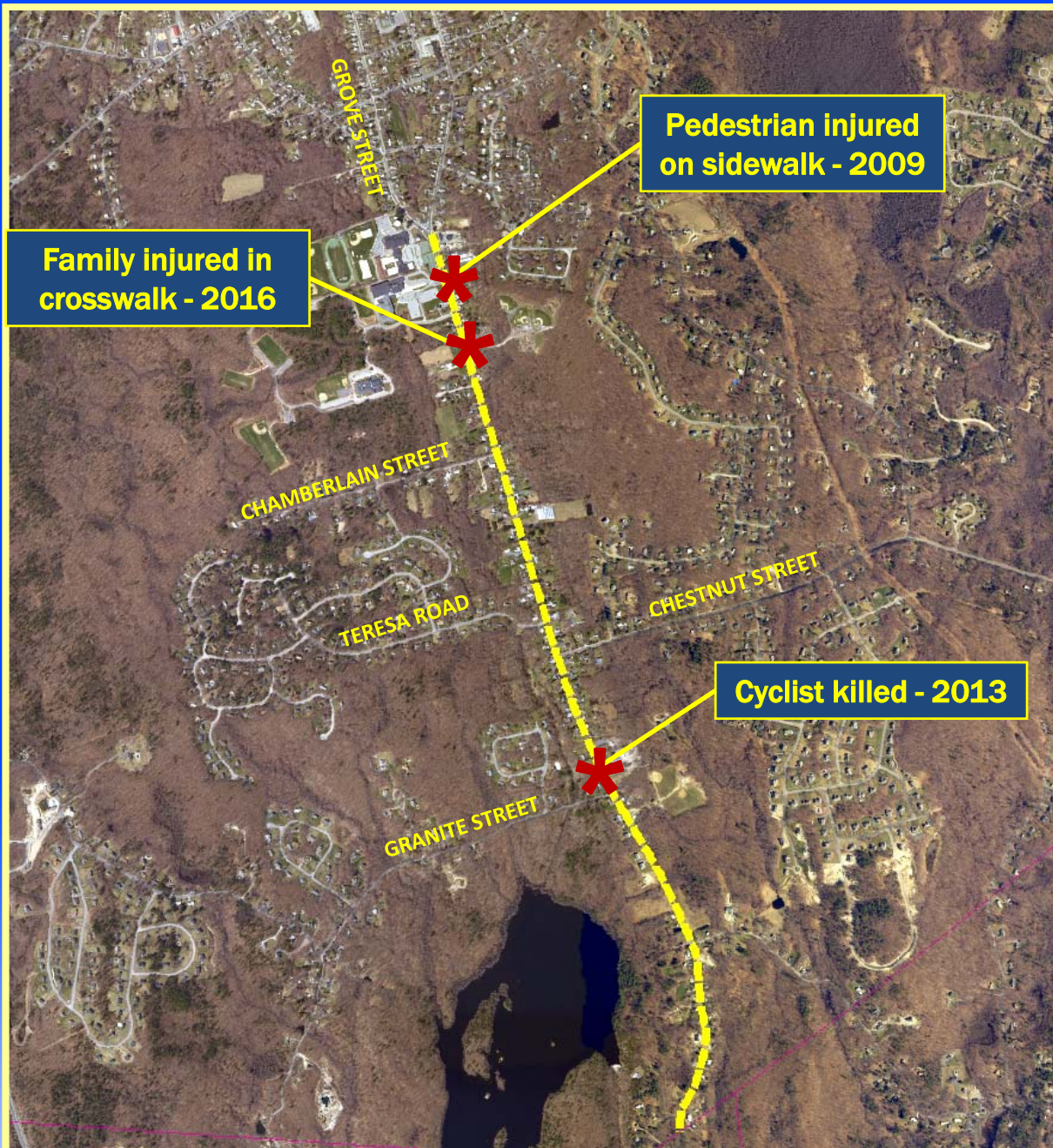
VEHICLE SPEEDS

85th Percentile Speed



CRASH HISTORY

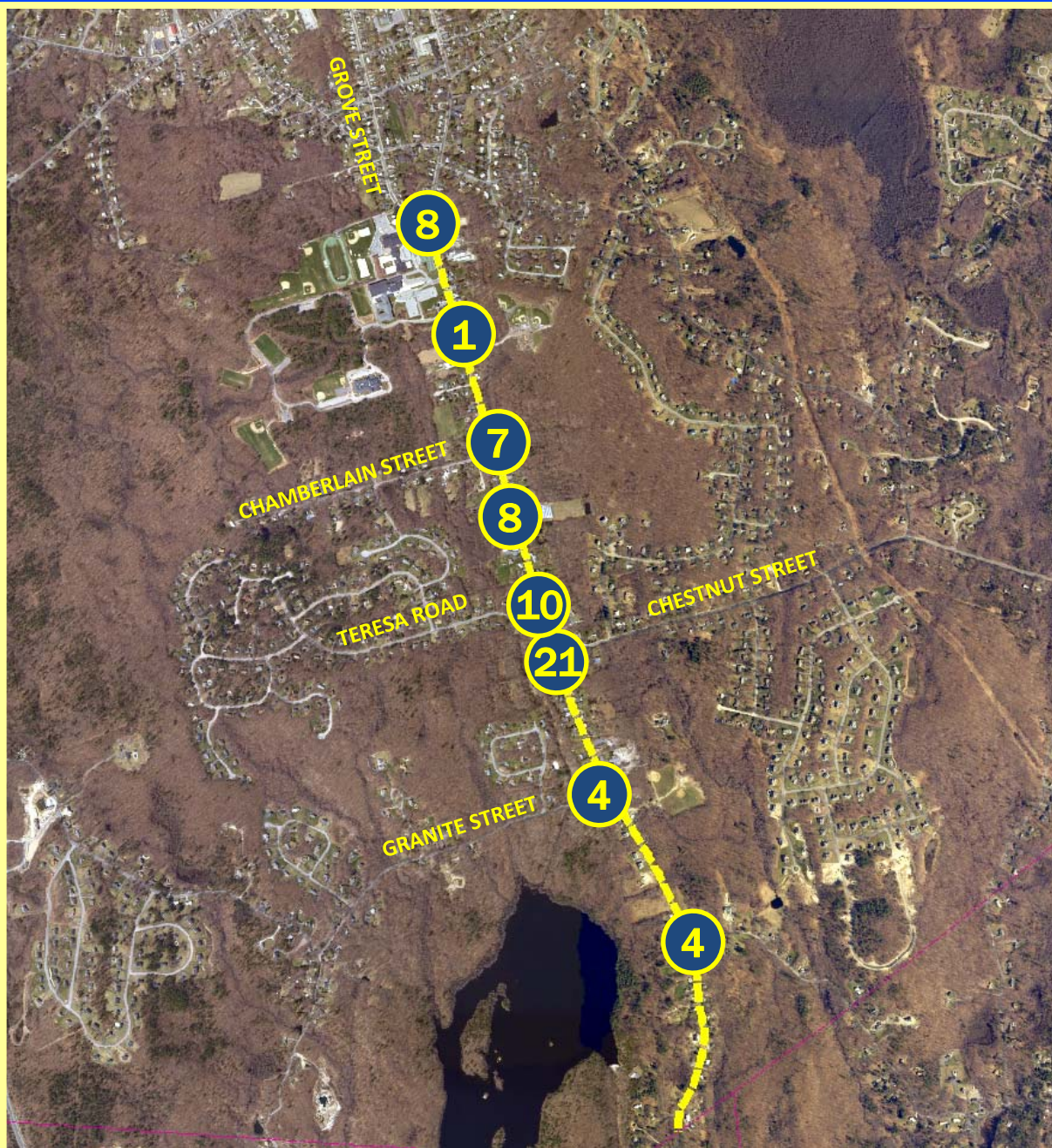
*Severe Pedestrian/
Bicycle Crashes*



CRASH HISTORY

MassDOT Reported Crashes 2010-2014

- 63 crashes in five years
- **23 (37%) - young drivers**
- 13 (21%) with injuries
- One fatality
- One bicycle crash
- No pedestrian crashes



CRASH HISTORY

Contributing Factors

- Travel Speed
- Corridor Geometry
- Reduced Sight Distance
- Traffic Congestion
- Driver Inexperience



TYPES OF TRAFFIC CALMING

- Vertical Deflection (Speed Humps, Raised Intersections)
- Horizontal Deflection (Chicanes, Chokers, Roundabouts)
- Gateway Treatments
- Narrowings / Neckdowns
- Non-Physical Measures



PROJECT GOALS

- ✓ Address Safety Concerns
- ✓ Reduction in Vehicle Travel Speeds
- ✓ Provide Operational Improvements
 - *Geometric Improvements*
 - *Traffic Control Improvements*
- ✓ Address School Traffic / Safety (*existing & future*)
- ✓ Manage Local and Through Traffic



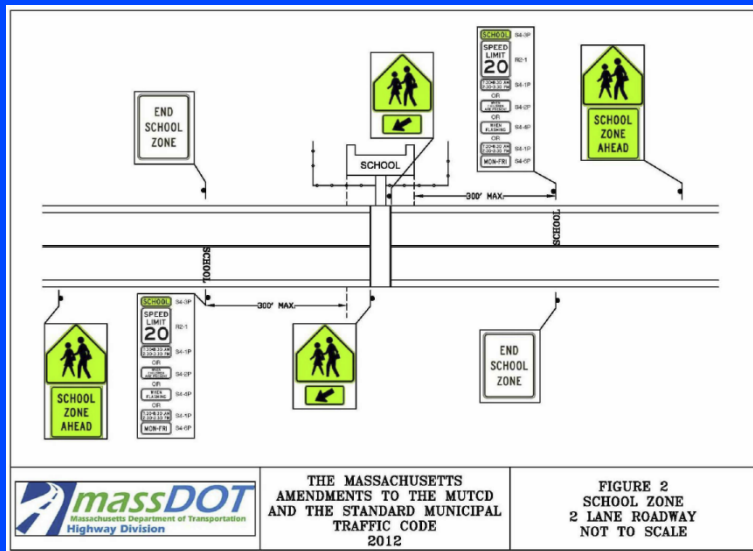
Short Term Improvements

Corridor Radar Feedback Signs



MIDDLE SCHOOL / HIGH SCHOOL SEGMENT

Enhanced School Zone Demarcation



- May be posted up to 300-feet from a school building (Grades 1-8 only);
- Students must have access to a marked, unsignalized crosswalk;
- 20 mph speed limit only in effect when students are present.



EMC² Park Intersection

Pedestrian Accommodation / Safety Improvements



- ✓ Pedestrian Accommodations
- ✓ Increased Pedestrian Awareness (RRFB)
- ✓ Increased Driver Yielding vs. Static Signs (RRFB)



CORRIDOR WIDE IMPROVEMENTS

South of Granite Street Warning Signage

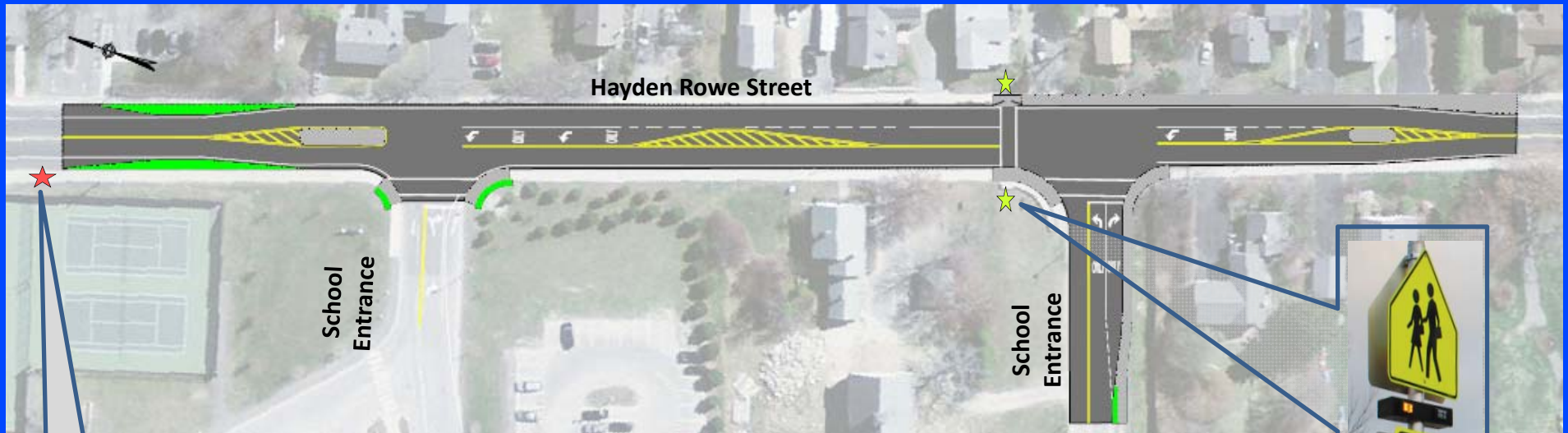
- Improve driver sight distance through:
- Installation of safety / warning signage
 - ✓ Intersection Warning signs;
 - ✓ High Visibility Chevrons;
 - ✓ Curve Warning signs with advisory speed plaques (if applicable).



Long Term Improvements

MIDDLE SCHOOL / HIGH SCHOOL SEGMENT

Long Term Capital Improvements



School Zone
Flashers

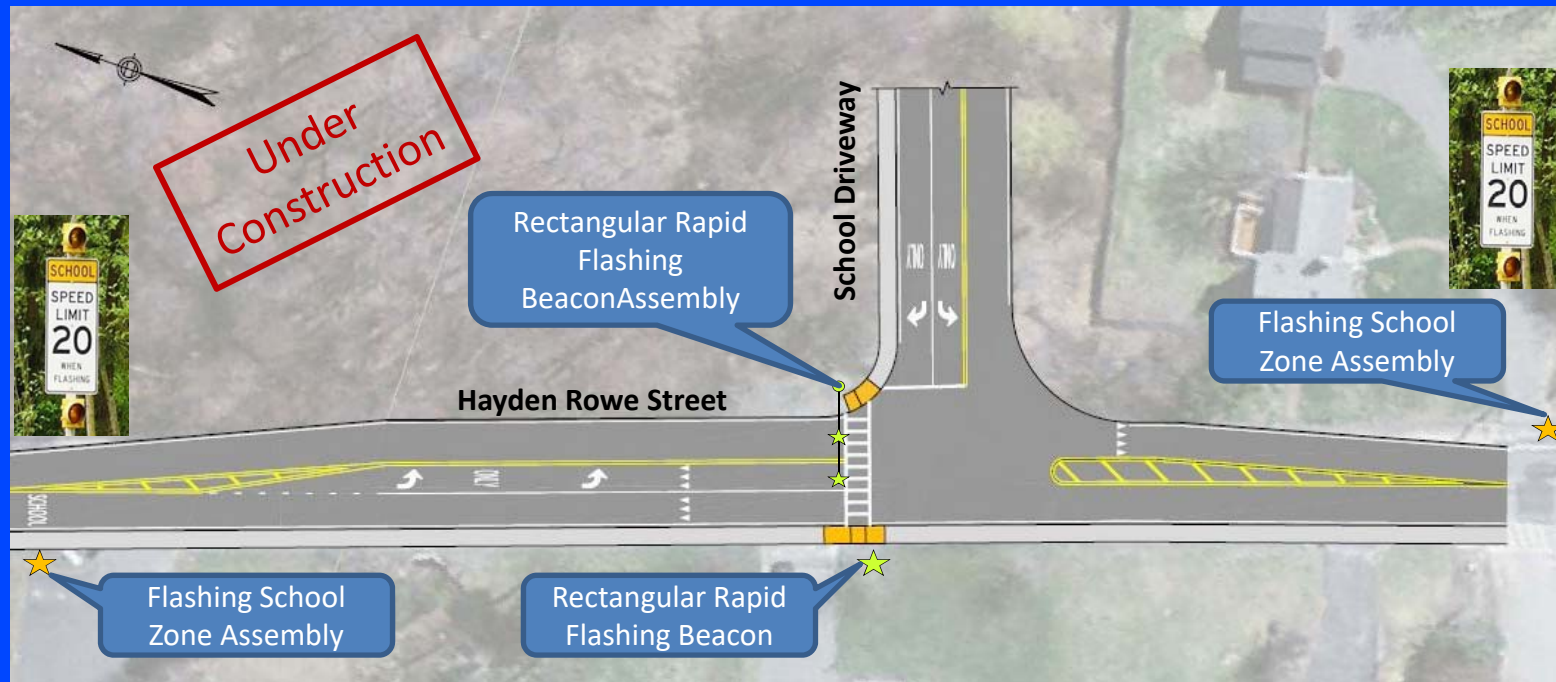
- ✓ Gateway Treatment for Traffic Calming
- ✓ Dedicated Lanes for Turning Vehicles
- ✓ Improved Operations During School Drop-off / Dismissal
- ✓ Pedestrian Enhancements / Accommodations (RRFB)
- ✓ Additional Traffic Calming – Radar / Neckdowns / Lateral Shifts



Potential
Location of
Rectangular
Rapid Flashing
Beacon
(RRFB)

ELEMENTARY SCHOOL DRIVEWAY

Long Term Capital Improvements



- Improved Operations
- Enhanced Pedestrian Accommodations / Visibility
- Opportunity for Median/ Gateway treatment

CHESTNUT STREET INTERSECTION

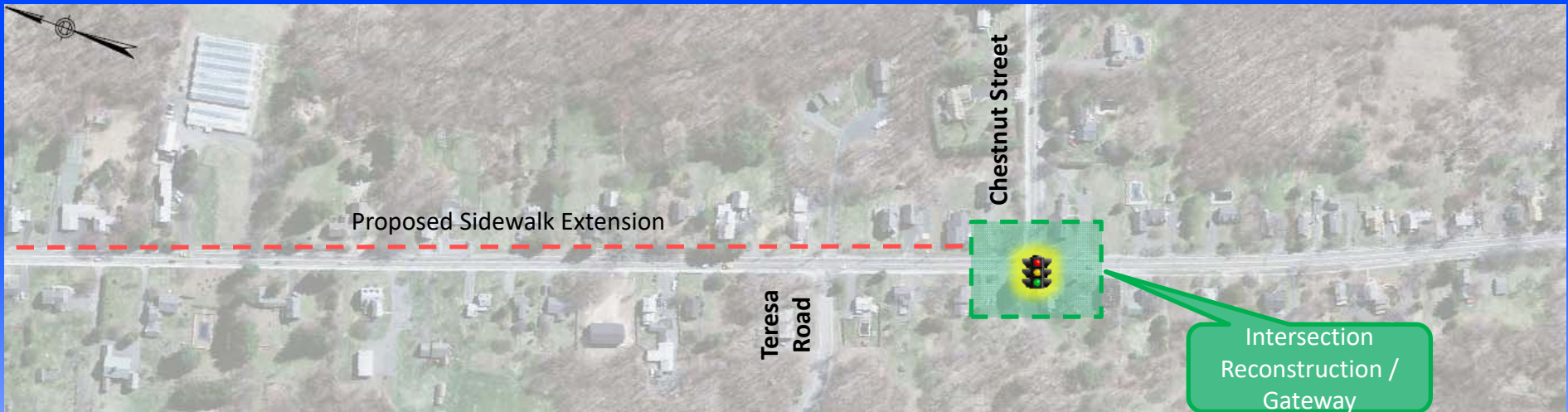
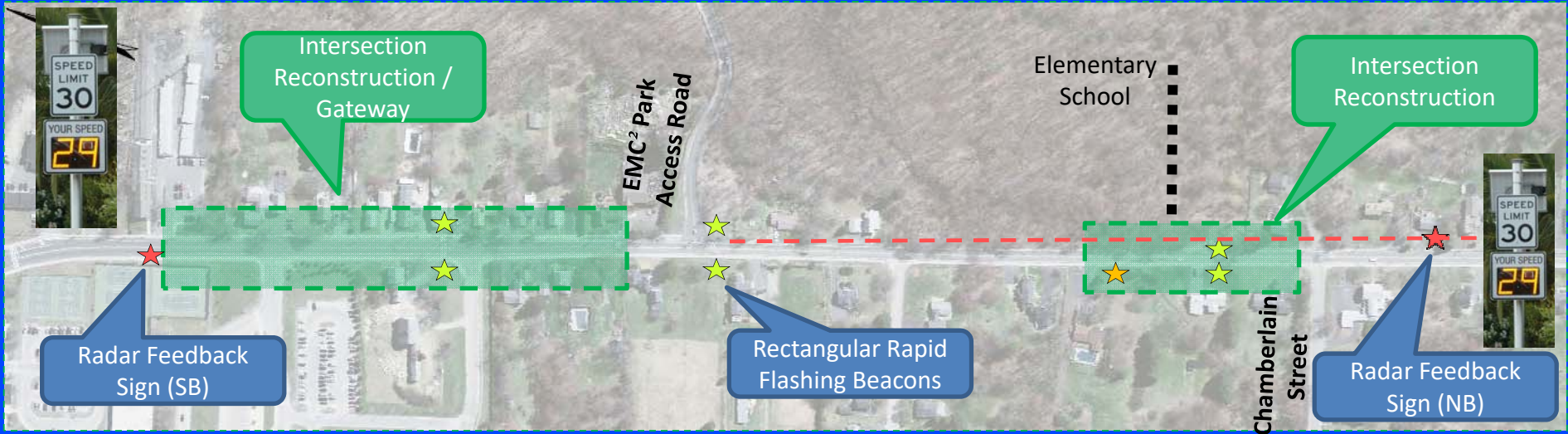
Long Term Capital Improvements



- Traffic Signal
- Improved Operations
- Provides Gaps in Traffic Flow
- Enhanced Pedestrian Accommodations
- Opportunity for Median/ Gateway treatment

OVERVIEW OF PROPOSED IMPROVEMENTS

Middle School / High School to Chestnut Street



Long Term Capital Improvements

Short Term Improvements



SUMMARY OF ORDER OF MAGNITUDE COSTS

Short Term Improvements

- Speed Radar Feedback Signs (2 Locations) \$30,000
- School Zone Signage / Flashers \$40,000
- Rectangular Rapid Flashing Beacons (2 locations) \$30,000
- Warning Signs and Markings \$10,000

SUMMARY OF ORDER OF MAGNITUDE COSTS

Long Term Improvements*

- Hayden Rowe Improvements @ School Driveways \$400,000
- Chestnut Street Intersection Improvements \$650,000
- Sidewalk Ext. from EMC Park to Chestnut Street \$640,000

****Costs Include Design, Construction, and Construction Phase Services***



NEXT STEPS

Current Phase

- ~~Data Collection~~
- ~~Public Workshop #1~~
- ~~Conceptual Design~~
- **Public Workshop #2**
- Refine Concept
- Cost Estimates
- Town Meeting

Next Phase

- Topographic Survey
- Preliminary Design
- Public Workshop #3
- Final Design
- Project Award and Construction

QUESTIONS?

