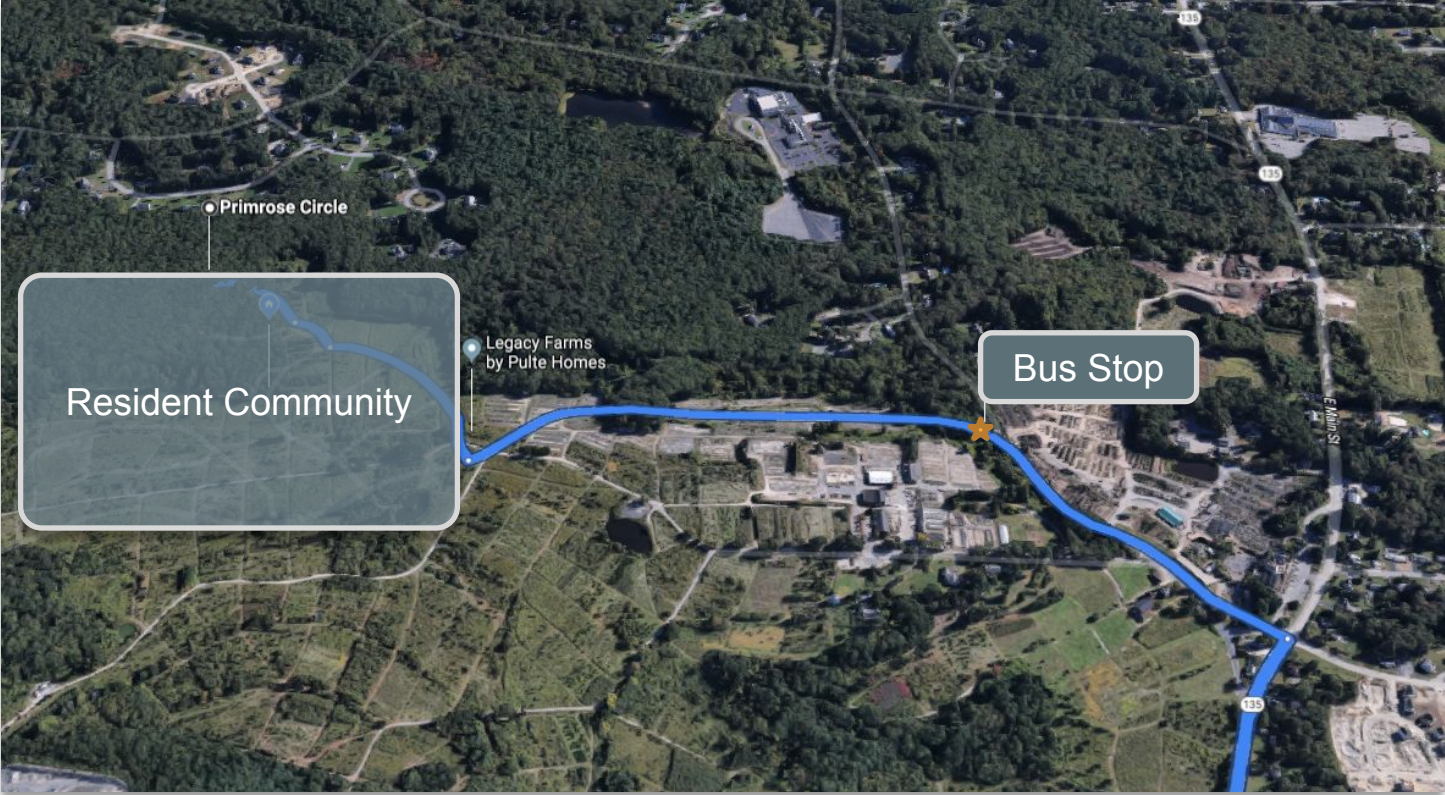




# Nearest Bus Stop: School Bus stops at the intersection of Frankland and Legacy Farms North Road



# Legacy Farms North Road - Details

- Technically a “Private Road”
- Legacy Farms North LOA (Land Owners Association) has to handover the road to the town by presenting a docket to the town selectmen annual meeting, to make the road “Public”
- Unlikely to be handed over to the Town, for the next 3-4 years until construction completes and last house is sold on this road
- School Bus Cannot come up to the entrance of Legacy Farms North
  - Though “De Facto” Public, Legacy Farms North Road remains officially private, until it is turned over to the Town
  - Insurance and Liability Concerns

# ~125 Students Safety Issue

- Upto one mile uphill and downhill walk to the houses inside Legacy Farms North, from and to the Bus Stop. (~125 students by Apr 2019)
- Parents, from 100+ houses, queuing up at the intersection of Frankland, with Cars, to drop children off, will cause traffic jams on the Legacy Farms North road (no shoulder or parking spots on the road)
- Issue will only be exacerbated with more houses being added to Legacy Farms North
- Significant public, downtown bypass traffic on the road with no posted speed limits. Possible treacherous conditions on sidewalks with snow and ice buildup during winter months
- Students walking up and down the steep icy sidewalk, with heavy backpacks and musical instruments, invitation for accidents

# Parties Involved: Responses and Effective Steps

Town Manager/  
Selectman

Legacy Farms North  
LOA (Developer)

Pulte (Builder)

School

**Response:** Residents go and talk to Builder/ HOA / Developer to arrange for private bus

**Effective Steps:**

1. Can push Developer to arrange for private bus
2. Allocate portion of funds to run private bus from funds collected from Developer
3. Pass "ByLaw" to grant Special status to LFN road as public

**Response:** We are ready to bear School bus insurance. Also let me talk to Pulte whether they can arrange for private bus

**Effective Steps:**

1. Can arrange for private bus
2. Allocate funds to run private bus for 3 years

**Response:** We are just builder, Please go and talk to Developer, HOA and Town

**Effective Steps:**

1. Can arrange for private bus
2. Allocate funds to run private bus for 3 years

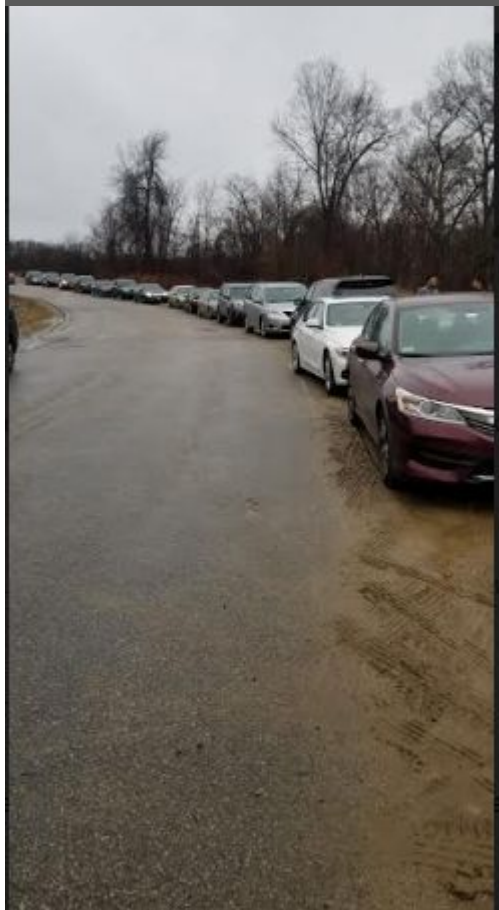
**Response:** Cannot force bus companies to run on LFN private road. Bus company raised Insurance and Liability concerns

**Effective Steps:**

1. Can negotiate with bus companies to make exception to this stretch
2. Allocate portion of funds to run private bus



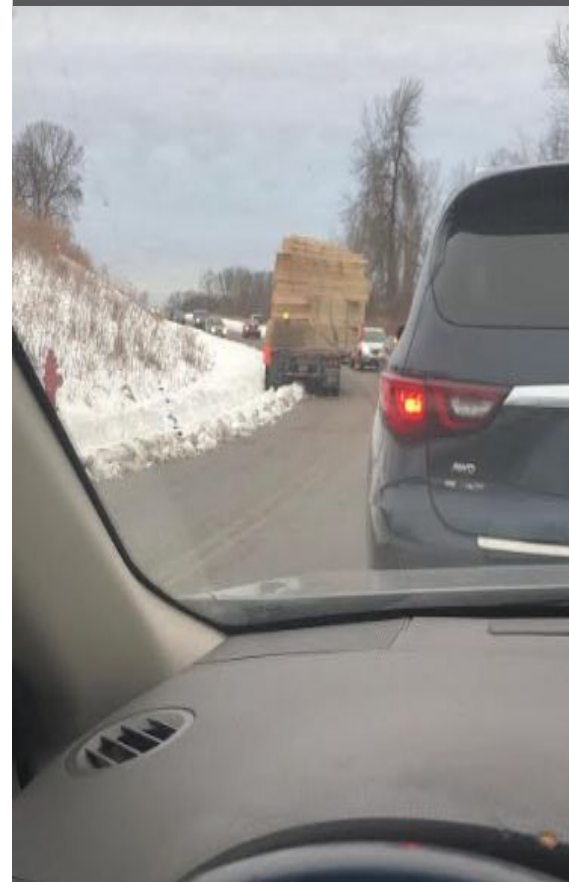
Current parking situation

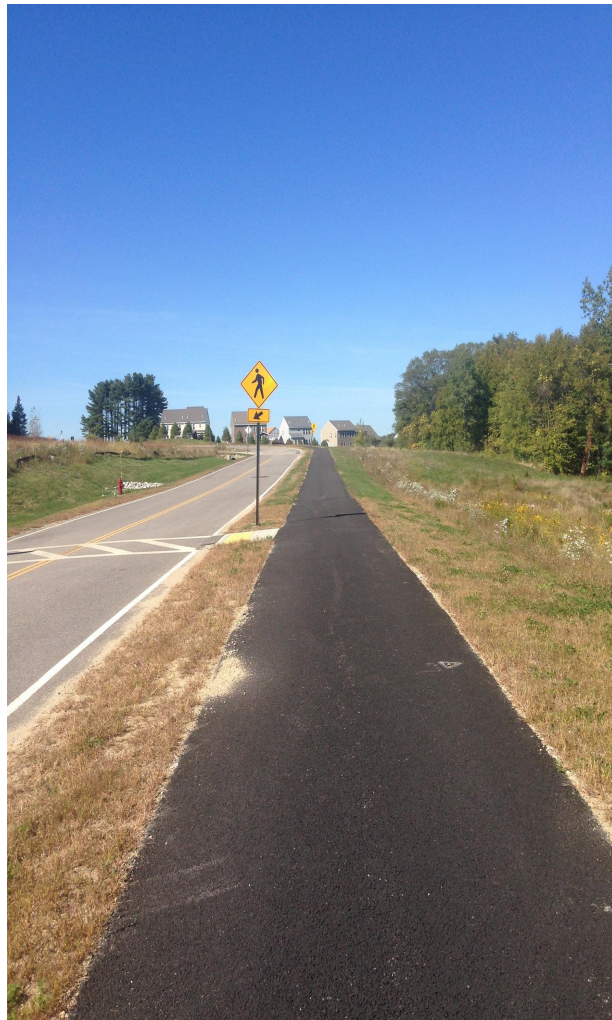


Heavy vehicles at bus stop



View from parent parked car







Current Bus Stop@ Intersection of Frankland Road and Legacy Farms Road North



Proposed Bus Stop@ Intersection of Spruce Street and Legacy Farms Road North





# Legacy Farms North Road - “De Facto Public”

- Built as a Private/Public Joint project with 5 Million \$ public funding from MassWorks.
- Open for public Access on April 6 2017, by state and local officials.
  - Juan Vega (Office of Housing and Economic Development)
  - Ken Weismantel (Hopkinton Planning board Chairman)
  - Carolyn Dykema (State Representative)
- Town Public notice during the opening
  - “It provides a vital link between Routes 85 and 135, serving as a bypass and relief valve for the now congested Main Street in the downtown”
  - “Mr. Weismantel, Chairman of the Planning Board, said. **Construction** of Legacy Farms Road North was funded through MassWorks grant and private funding and **managed by the Town**”
- <http://bit.ly/2kAQbfA>

# School Bus - The Request

- Bringing the school bus to the **intersection of Legacy Farms North and Spruce Street**, will ensure that the students do not have to walk on steep, icy roads, with heavy backpacks , through a mostly unpopulated neighborhood, with significant vehicular traffic
- Legacy Farms North is different from other private roads, because it is a “De facto public” road. It was built using public funds, and used regularly for public traffic that reduces downtown traffic congestion

# Number of Students - Apr 2019

<b>Pre School</b>	<b>Marathon School</b>	<b>ElmWood</b>	<b>Hopkins</b>	<b>Middle</b>	<b>High</b>
11	41	26	17	15	8
				<b>Total</b>	<b>118</b>